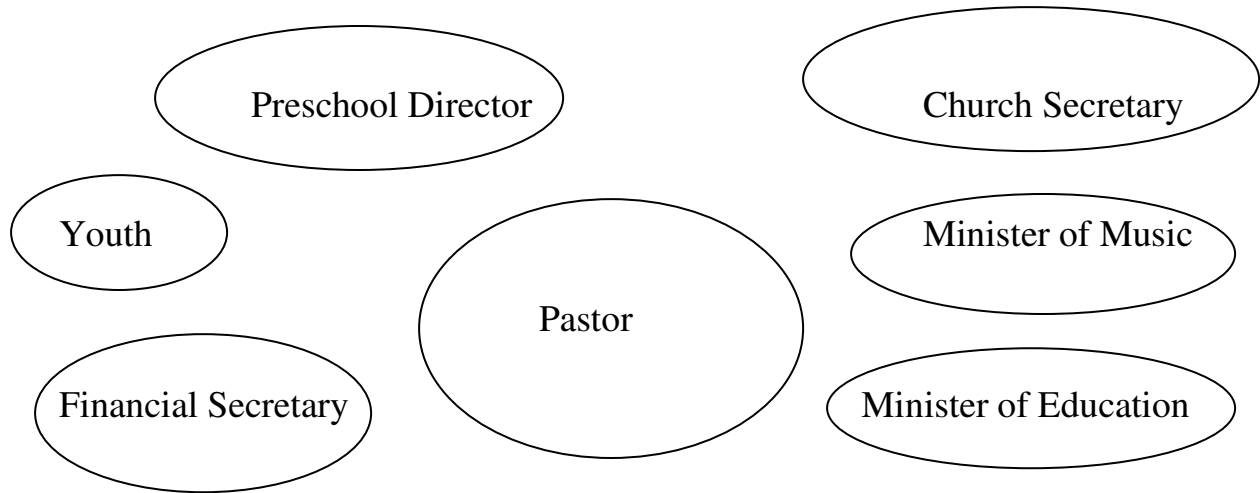


CHURCH STAFF RELATIONS



INFLUENTIAL	RELATIONAL
<p>Draw a circle for each staff member in proportionate size to symbolize the amount of influence you feel they have with the entire staff and/or church.</p> <p>This, of course, is one's experience, feelings, or perception about the influence. Share your circles with the other staff members and give your reasons for the proportionate sizes. In sharing, one does not have to defend his reasons nor his feelings for the circles.</p>	<p>Rearrange your circles to indicate the intimacy or closeness of staff members with each other. In other words, who is closest to whom? Who is detached or apart?</p> <p>Note: The purpose of this exercise is to give each person an opportunity to express safely, his or her feelings and thoughts about the influential and relational functions of the staff.</p>

PROCESSING QUESTIONS

1. What circles would you like to see larger? Why?
2. What circles would you like to see closer? Why?
3. What circles would you like to see further apart? Why?