

# Let's Share!

A Cooperative Program Children's Activity Book



*This book belongs to:*

---

---

---

A note to parents,

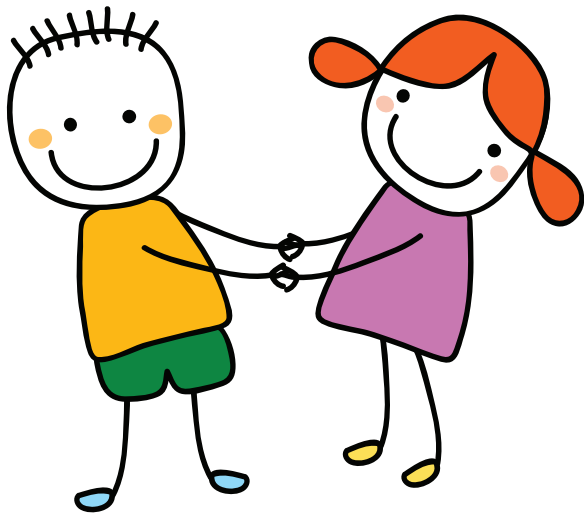
We created this Cooperative Program (CP) activity book to help teach your children about the unique way Southern Baptists work together to share the love of Jesus at home and around the world.

Through the Cooperative Program, your church, the Missouri Baptist Convention, and the Southern Baptist Convention share financial resources that enable us to do more together than we could ever do alone. This partnership begins with you, your children, and your gifts to your local church. A portion of your church's annual budget is shared through the Cooperative Program, which supports missions and ministries at the state, national, and global levels.

Learn more about CP, and download free copies of this activity book, at [mobaptist.org/cp](http://mobaptist.org/cp).

Order free printed copies by calling 800.736.6227 ext. 303, or by sending an email to [cp@mobaptist.org](mailto:cp@mobaptist.org).

*Thank you for sharing through the Cooperative Program.*



# What is a Missionary?

**Missionaries are people who are sent to ...**

- Tell other people about Jesus and the Bible
- Help people in need
- Work with people in other countries, states, or even in a local church.

---

**What is one truth you know about Jesus?**

---

---

**Name a friend you can tell about Jesus:**

---

---

**Why should you tell others about Jesus?**

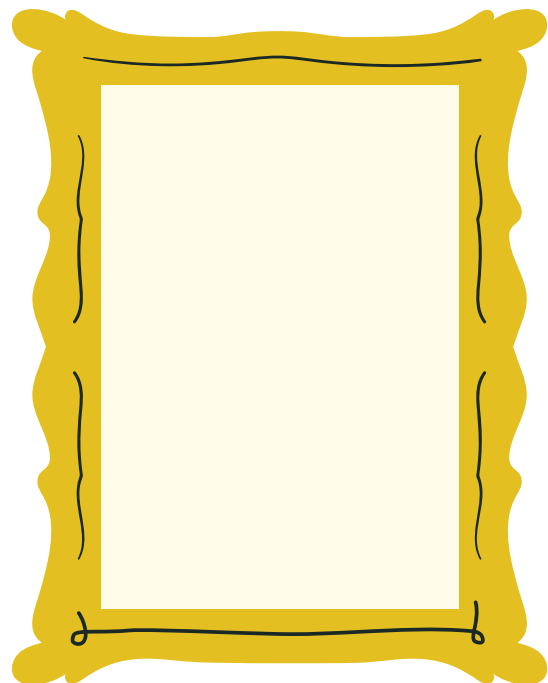
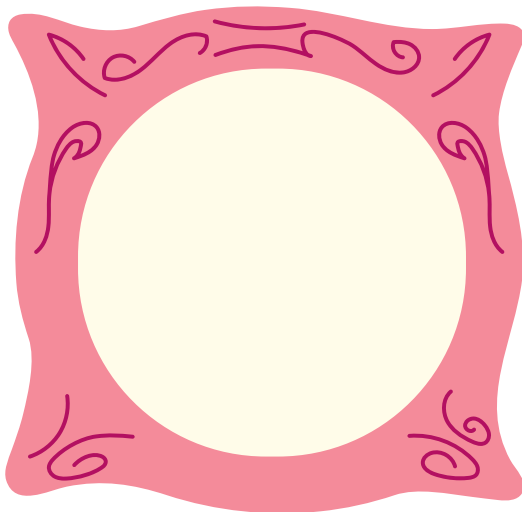
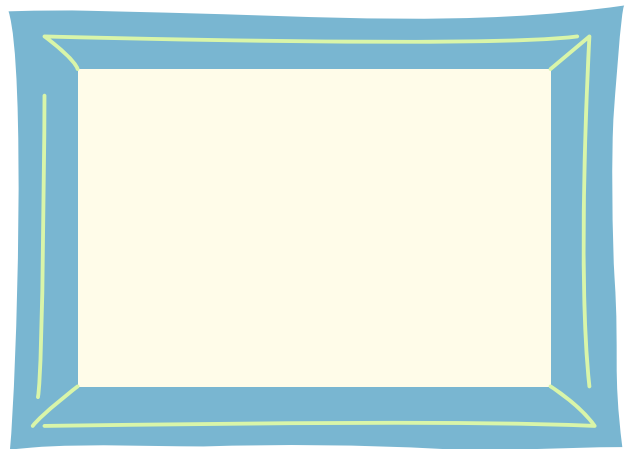
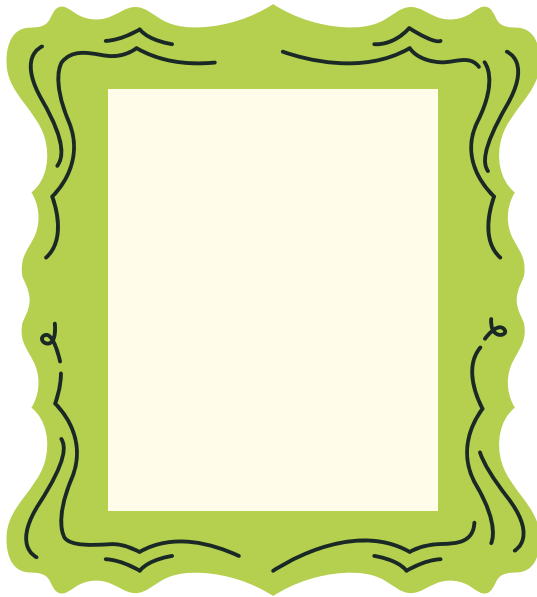
---

---

# Let's share by putting ...

love in ACTION

Draw inside the picture frames below some actions you can take to show God's love to others:



# What is the Cooperative Program?

Cooperation means working together. Southern Baptists work together through the Cooperative Program, or CP.

CP makes it possible for people, churches, and states to share what they have to support ministries and missionaries all over the world.

It all starts with offerings given to churches just like yours.



## COOPERATIVE PROGRAM

*Southern Baptists fund state, national, and international missions through a plan called the Cooperative Program.*

Unscramble the eight underlined words found on pages 3 and 5:

|              |  |
|--------------|--|
| IBBEL        | <input type="text"/> <input type="text"/> <input type="text"/> <input type="text"/> <input type="text"/> <input type="text"/>  |
| SEIRSMOISINA | <input type="text"/> <input type="text"/> <input type="text"/> <input type="text"/> <input type="text"/> <input type="text"/> <input type="text"/> <input type="text"/> <input type="text"/> <input type="text"/> <input type="text"/> <input type="text"/> <input type="text"/> <input type="text"/> <input type="text"/> |
| SNRGFOEIF    | <input type="text"/> <input type="text"/> <input type="text"/> <input type="text"/> <input type="text"/> <input type="text"/> <input type="text"/> <input type="text"/> <input type="text"/> <input type="text"/>  |
| EISMNRITIS   | <input type="text"/> <input type="text"/> <input type="text"/> <input type="text"/> <input type="text"/> <input type="text"/> <input type="text"/> <input type="text"/> <input type="text"/> <input type="text"/> <input type="text"/>   |
| HRUHCC       | <input type="text"/> <input type="text"/> <input type="text"/> <input type="text"/> <input type="text"/> <input type="text"/> <input type="text"/>   |
| SUEJS        | <input type="text"/> <input type="text"/> <input type="text"/> <input type="text"/> <input type="text"/> <input type="text"/>  |
| RWOK         | <input type="text"/> <input type="text"/> <input type="text"/> <input type="text"/> <input type="text"/>   |
| OLEEPP       | <input type="text"/> <input type="text"/> <input type="text"/> <input type="text"/> <input type="text"/> <input type="text"/> <input type="text"/>   |

# International Missions



**INTERNATIONAL**  
MISSION BOARD

**International missionaries are people who:**

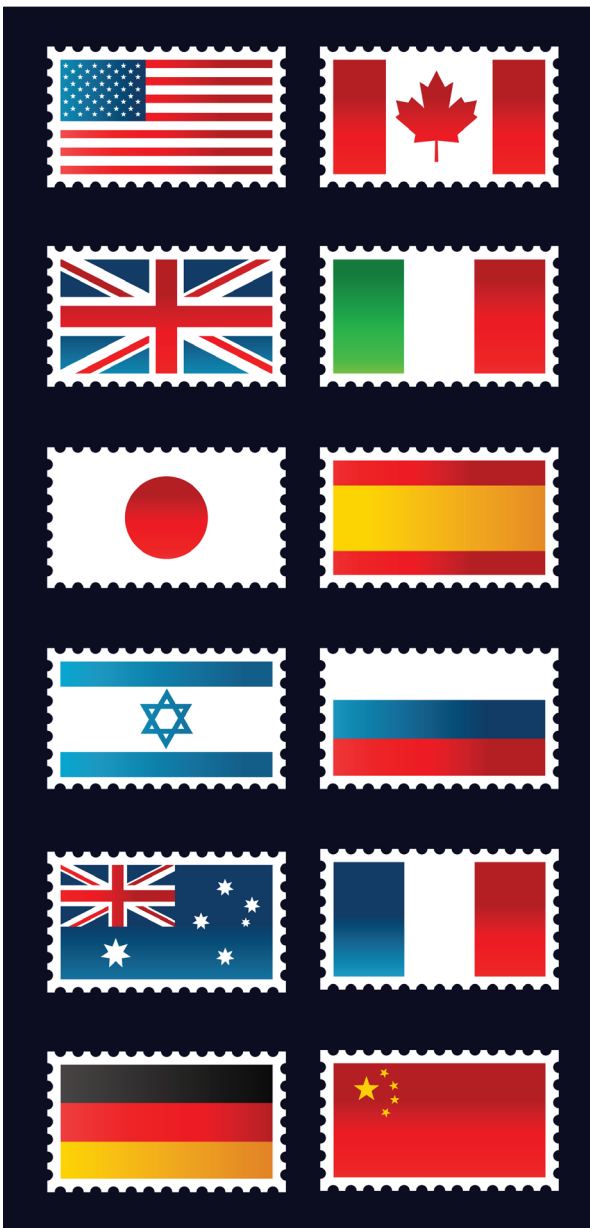
- Go to countries other than their own
- Often learn new languages and cultures
- Share about Jesus and the Bible
- Help start churches in new places

The Cooperative Program gives money to the International Mission Board, which sends more than 3,500 missionaries to nearly 200 countries. When you give to your church, children all over the world hear about Jesus.

**Who do you know from a different country?** \_\_\_\_\_

**What country?** \_\_\_\_\_

**What can you tell them about Jesus?** \_\_\_\_\_



## Can you identify any of these flags?

### Check out the hints below:

- Canada's flag features a maple leaf
- Three vertical stripes for France – and one stripe is blue
- Spain's flag has a big yellow stripe
- Green, white, and red for Italy
- Australia's flag has six stars
- A red flag with five yellow stars for China
- Germany's flag has three stripes, with black on top
- Japan's flag is the simplest: a red sun on a white background
- The United Kingdom's flag has a cross in the middle
- You'll find the Star of David on Israel's flag
- The U.S. flag is called the "Stars and Stripes"
- White, blue, and red horizontal stripes for Russia



# North American Missions



**North American  
Mission Board**

**North American missionaries are people who:**

- Work in the United States and Canada
- Start new churches
- Help feed hungry people
- Help people recover from floods, fires, and other disasters

**Money from the Cooperative Program goes to the North American Mission Board, which supports 2,400 missionaries and 3,700 chaplains in the United States and Canada.**

**What's a chaplain?**

Chaplains are missionaries who serve in special places like hospitals, the military, prisons, and on the scene of disasters.

**What are some ways you can support missions in North America:**

- Go online to learn more about our missionaries at [namb.net](http://namb.net) and download the prayer calendar
- Pray for missionaries by name
- Send them a note of encouragement
- Be a missionary in your neighborhood: collect food and clothing for local distribution; volunteer at your church
- Give a tithe

**What's a tithe?**

A tithe is a portion (10 percent) of your income given as an offering to your church.  
(Fun fact: the word "tithe" means "tenth" in Hebrew.)

**Look at the 10 coins.**

**How many of those coins make a tithe? \_\_\_\_\_**



# State Missions



**State missionaries are people who:**

- Serve in the state where they live
- Help pastors and other church leaders tell people about Jesus
- Start new churches wherever they're needed
- Provide special help for children, senior citizens, and others in need
- Support the work of local churches across the state

**Money from the Cooperative Program goes to the Missouri Baptist Convention, which sends more than 30 state missionaries to work with 1,750 local churches.**

---

**Place a star on the map of Missouri to show where you live.**





## **Draw a line to connect the Missouri Baptist ministry with the proper description:**

### **Evangelism**

- Helping everyone be a better Christian leader – even kids

### **Discipleship**

- Helping survivors of floods, tornadoes, and other disasters

### **Church Multiplying**

- Teaching kids about Jesus during special summertime events

### **Collegiate Ministries**

- Telling others about Jesus

### **Developing Leaders**

- Helping children in need

### **Disaster Relief**

- Helping people and churches be good stewards of their money

### **Vacation Bible School**

- Teaching others to follow Jesus

### **Partnership Missions**

- Hannibal-LaGrange University, Southwest Baptist University, and Missouri Baptist University

### **Missouri Baptist Children's Home**

- Serving senior citizens and others in need

### **Missouri Baptist Foundation**

- Starting new churches where they're needed

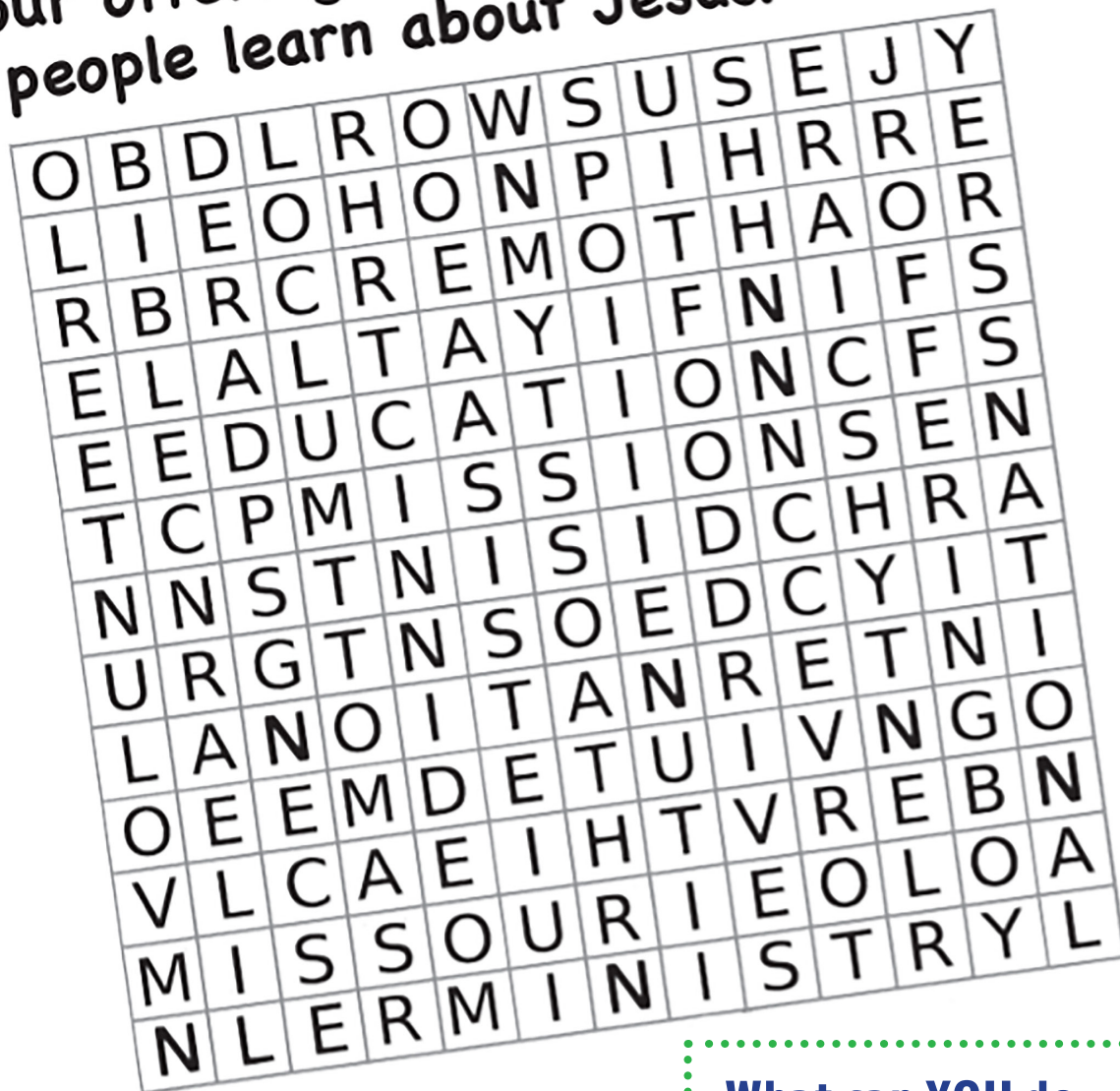
### **Missouri Baptist Universities**

- Churches in Missouri become partners with churches in other parts of the world

### **Baptist Homes & Healthcare Ministries**

- Helping college students follow Jesus

**Your offerings help  
people learn about Jesus!**



*Can you find the words listed below?*

*(They may appear horizontally, vertically, diagonally, forwards, and backwards.)*

|               |            |           |
|---------------|------------|-----------|
| Bible         | learn      | offering  |
| camp          | ministry   | serve     |
| education     | missionary | teach     |
| food drives   | missions   | tithe     |
| God           | Missouri   | volunteer |
| international | national   | world     |
| Jesus         |            |           |

**What can YOU do  
to help people learn  
about Jesus?**

1. \_\_\_\_\_  
\_\_\_\_\_
2. \_\_\_\_\_  
\_\_\_\_\_
3. \_\_\_\_\_  
\_\_\_\_\_

# Watch your gifts grow!

Start at the bottom and see how the Cooperative Program helps your offering reach around the world.

Color in each stage of growth.

People all over the world hear about Jesus



The Southern Baptist Convention receives Cooperative Program gifts from Missouri and other state conventions, and sends nearly 10,000 missionaries and chaplains across North America and around the world.

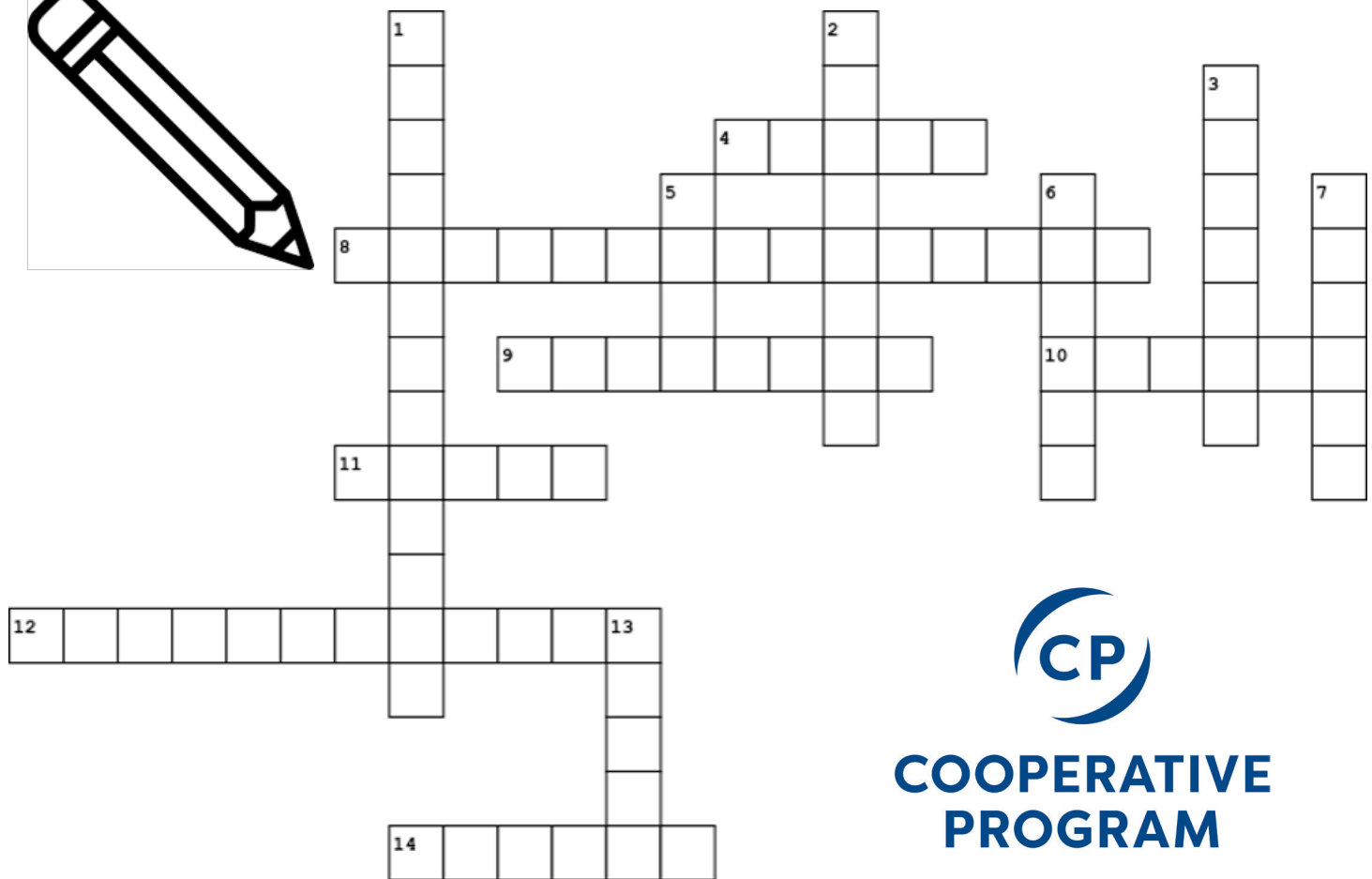
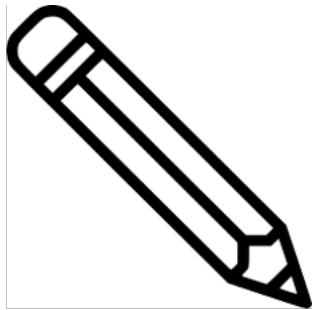
The Missouri Baptist Convention (MBC) receives Cooperative Program gifts from your church and 1,750 other churches in Missouri. The MBC uses some of the money for missions in Missouri, and sends the rest to the Southern Baptist Convention.



Your church takes your offering, along with the gifts of other church members, and sends some to the Cooperative Program.



# Cooperative Program Crossword



**COOPERATIVE  
PROGRAM**

## Across

- 4. Son of God
- 8. Christ's command in Matthew 28:19-20
- 9. A gift of time or money
- 10. A minister who leads a church
- 11. Giving back 10 percent
- 12. People who help others learn about Jesus
- 14. Talking to God

## Down

- 1. Around the world
- 2. Work of a person sent to serve others
- 3. Natural abilities God gives everyone
- 5. Deep affection for people
- 6. The story of Christ's life and teachings
- 7. A house of worship
- 13. To act as a servant and help others

## Hint: Select from these words...

Prayer Love Gospel Great Commission Jesus Talents Church Tithe  
Pastor Missions International Offering Serve Missionaries

# Who Can Help?

Every single person, in every church, is important – including you. When you make an offering to God, you are helping other people learn about Jesus.

---

**Color the person to look like you!**

**How can you use your eyes to share Jesus?**

---

**What can you tell others with your mouth about Jesus?**

---

**How does your heart lead you to tell lost people about Jesus?**

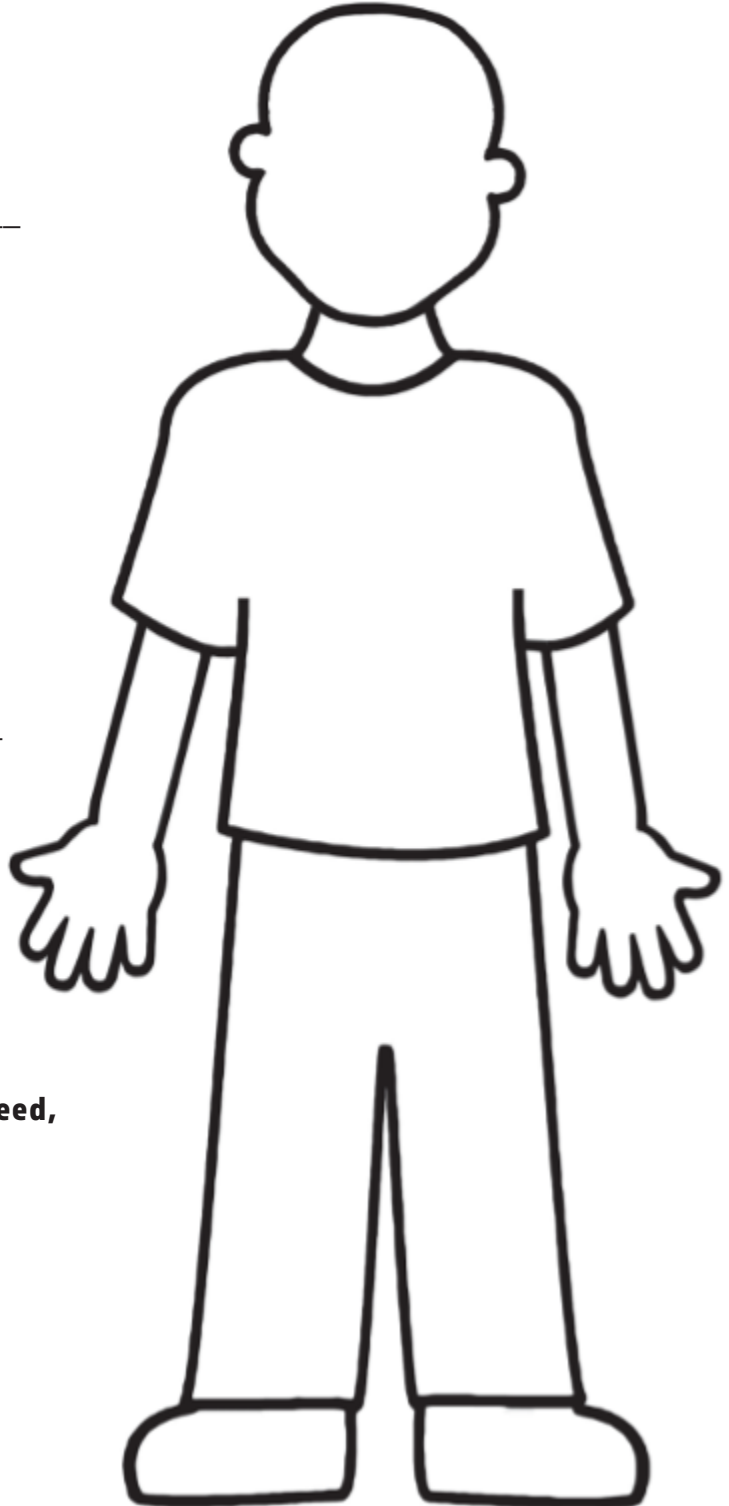
---

**What can you do with your hands to show the love of Jesus to others?**

---

**How can you use your feet to help people in need, and to tell them about Jesus?**

---



# Missions Organizations

Your Cooperative Program gifts make it possible for six special missions organizations to help people in Missouri.

.....

## Connect the logo with the missions organization:

**Missouri Baptist University** –  
established in 1964, MBU helps students  
change the world for the better.

**Hannibal-LaGrange University** –  
the oldest of our universities, founded in  
1858, HLGU helps students discover,  
develop, and demonstrate God's purpose in their lives.

**Southwest Baptist University** –  
established in 1878, SBU prepares  
students to be servant leaders around the world.

**Baptist Homes & Healthcare Ministries** –  
providing quality care for the aged since 1913.

**Missouri Baptist Children's Home** –  
shows God's love to hurting children, youth, and families.

**Missouri Baptist Foundation** –  
helps people and churches use God's money wisely.





# How missions organizations serve others

.....

**Review the six missions organizations on page 14 and match the pictures below with one or more organizations that help these people:**

Which organization keeps children safe and finds good homes for them?

\_\_\_\_\_

With the help of a teacher or your parents, go online to [mbch.org](http://mbch.org) and list ways this organization helps children, youth, and families:



\_\_\_\_\_

Which organization helps people learn to save and spend money wisely?



\_\_\_\_\_

Which organization takes good care of our senior citizens?



\_\_\_\_\_

With the help of a teacher or your parents, go online to [thebaptisthome.org](http://thebaptisthome.org) and list ways this organization helps the elderly:

\_\_\_\_\_

Which three organizations help students prepare to live for Jesus as adults?





**The Cooperative Program is  
the financial fuel for reaching**

**EVERY person for Jesus Christ  
in EVERY town,  
EVERY city,  
EVERY state,  
and EVERY nation!**



A special thanks to Christy Nance and Jamie Brown — Missouri Baptist children's specialists who made this children's activity book possible.

