

generosity.

How Missouri Baptists Invested in God's Kingdom in 2025.

mb MISSOURI
BAPTISTS

MMO
RHEUBIN L. SOUTH
MISSOURI MISSIONS OFFERING

CP COOPERATIVE
PROGRAM

YOU DID IT AGAIN!

Thank you, Missouri Baptists, for giving so generously to state missions in 2025 through the Rheubin L. South Missouri Missions Offering.

Here's what you accomplished:

- Invested \$952,530 in state missions, the third-highest total since the offering was established in 1985
- Gave more than \$700,000 for the 13th straight year
- Gave through 671 MBC-affiliated churches
- Supported two dozen ministries and more than 40 missions projects, from foster care to disaster relief
- Responded enthusiastically to the theme: "For we are his workmanship, created in Christ Jesus for good works, which God prepared ahead of time for us to do" (Eph. 2:10)

Remember: When you give to MMO, someone takes it personally.

Contents



Extraordinary Generosity	3	Church Renewal	25
I. The Big Picture	4	Collegiate Ministries	27
Giving at a Glance	5	Disaster Relief	31
MMO Tops \$950,000	6	SBC/MBC Shared Administration	33
MMO Helps Associations	7	Supporting Ministries	35
How the Cooperative Program Works	9	IV. Missouri Baptist Entities	38
II. Global Impact	12	Missouri Baptist Children's Home	39
Missouri Baptists' Investment in SBC Causes	13	Baptist Homes & Healthcare Ministries	41
III. Missouri Baptist Causes	16	Missouri Baptist Foundation	43
Prayer & Evangelism	19	Christian Higher Education	45
Missions Mobilization	21	Comparison of 2024 vs 2025	47
Send Missouri	23	Better Together: Six Entities and Campus Missionaries	48



Extraordinary Generosity

Missouri Baptists enjoyed an exceptionally strong year of giving to missions in 2025. That's because all of you – pastors, ministry leaders, and members of more than 1,700 affiliated churches – intentionally, strategically, and sacrificially gave as a tangible expression of cooperation for the cause of Christ.

Simply stated, you displayed extraordinary generosity, and for that I am sincerely grateful.

Consider some of what you accomplished in 2025:

- You invested more than \$950,000 in state missions through the Rheubin L. South Missouri Missions Offering – the third-highest total ever.
- For only the third time since 2009, you gave more than \$15 million to the Cooperative Program, the funding process Southern Baptists have used for more than 100 years to advance the gospel in our state and around the world.

- And you exceeded the goals for the Annie Armstrong Offering for North American missions, the Lottie Moon Offering for international missions, and Global Hunger Relief.

Together, we reached these milestones for one purpose: to proclaim Jesus as the Christ in Missouri, throughout our nation, and to the ends of the earth!

As you'll see on the following pages, your generosity means more lost people are hearing the gospel. More children are finding forever homes with Christian parents. More students are receiving educations grounded in a biblical worldview. More survivors of natural and manmade disasters are receiving help, hope, and healing. And that's just the beginning.

I am truly grateful for Missouri Baptists and your cooperative heart for the lost. May the Lord continue to find us faithful in our stewardship of the resources he has entrusted to us for the advancement of His kingdom.



Wes Fowler
Executive Director-Treasurer

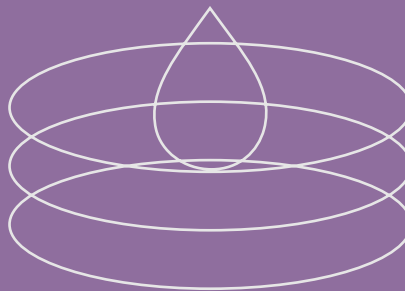


generosity.

Section 1: THE BIG PICTURE

Missouri Baptists invested generously in missions in 2025. In this section, we survey the big picture with a focus on totals for the Cooperative Program (CP), Rheubin L. South Missouri Missions Offering (MMO), Annie Armstrong Offering for North American Missions, Lottie Moon Offering for International Missions, and Global Hunger Relief.

We also see how CP and MMO gifts were distributed in 2025, learn how the Cooperative Program works, and understand how each dollar invested in CP helps churches transform lives and communities with the gospel.



Giving at a Glance



WHERE YOUR COOPERATIVE PROGRAM GIFTS WENT IN 2025 *

Southern Baptist Convention Causes	\$	5,820,849
MBC Missions & Ministries	\$	5,460,640
GuideStone Pastor Protection	\$	402,394
Pathway News Journal	\$	352,001
Cooperative Program Promotion	\$	150,879
Missouri Baptist Institutions and Entities:	\$	3,284,636
Missouri Baptist University	\$	963,638
Southwest Baptist University	\$	776,096
Hannibal-LaGrange University	\$	648,681
Missouri Baptist Children's Home	\$	697,061
Missouri Baptist Foundation	\$	99,580
Baptist Homes & Healthcare Ministries	\$	99,580

Total MBC Cooperative Program Receipts **\$ 15,471,399**
Note: These are unaudited figures

* Cooperative Program (CP) receipts above the \$15 million goal were allocated 50 percent to the Southern Baptist Convention and 50 percent to Missouri Baptist Missions & Ministries. The CP totals reported on the pages that follow reflect these adjustments.

Missouri Missions Offering Tops \$950,000

Receipts for the 2025 Rheubin L. South Missouri Missions Offering (MMO) topped \$950,000, as Missouri Baptists gave generously to state mission projects ranging from foster care to disaster relief.

MMO receipts in 2025, which are disbursed in 2026, totaled \$952,530, outpacing the goal of \$800,000 and reaching the third-highest level since MMO was introduced in 1985. Last year's record of \$1,072,207 was aided by an estate gift of \$136,000.

Receipts in 2025 marked the 13th straight year of MMO gifts above \$700,000.

The number of churches contributing to MMO totaled 671, compared with 672 the previous year. The average MMO gift per church dropped slightly from \$1,301 in 2024 to \$1,261 in 2025.

Gifts through local churches accounted for 88.8 percent of total MMO giving in 2025, while direct gifts from individuals reached 7.4 percent and gifts from institutions were 3.8 percent.

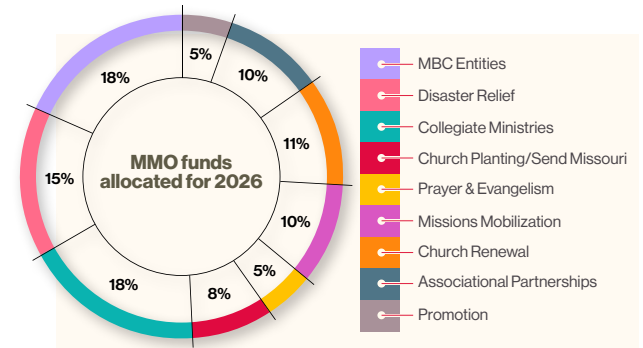
Missouri Baptists responded enthusiastically to the MMO theme drawn from Ephesians 2:10: "For we are his workmanship, created in Christ Jesus for good works, which God prepared ahead of time for us to do."

MBC Executive Director-Treasurer Wes Fowler expressed deep gratitude for Missouri Baptists' commitment to state missions: "The Missouri Missions Offering strengthens the gospel impact of more than two dozen ministries and 40-plus evangelistic projects across our state. Because Missouri Baptists gave so generously in 2025, more marginalized children will find loving Christian homes, more volunteers will be mobilized to serve as the hands and feet of Jesus, and more lost people will hear the gospel. Thank you, Missouri Baptists, for giving so sacrificially for the cause of Christ."

Ten percent of MMO gifts go back to the associations of contributing churches, where the funds support regional mission projects. In 2025, this totaled \$86,498.

Funds raised in excess of the MMO goal are placed in reserve for future missions opportunities. At the same time, 10 percent of gifts above the goal is given to Missouri WMU, which promotes state, national, and international missions in MBC-affiliated churches.

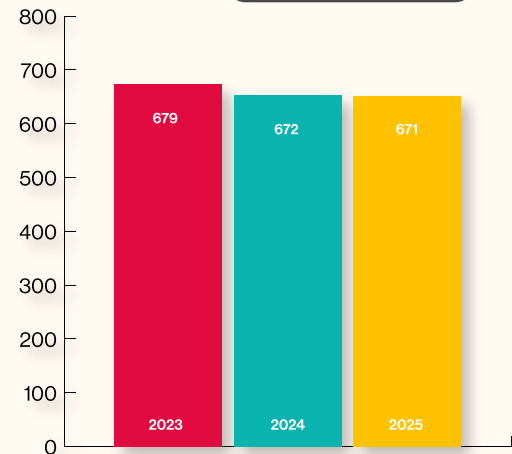
Missouri Baptists have approved a 2026 MMO goal of \$825,000. This June, the MBC announces the 2026 theme and provides churches with MMO resources.



MMO funds collected in 2025 support more than two dozen ministries, including:

- Missouri Baptist Children's Home
- Collegiate Summer Missions
- Disaster Relief Readiness
- Partnership Missions
- Missouri Woman's Missionary Union
- Christian Higher Education
- Leader Care Network

...and so much more



Number of Churches Contributing to MMO

The Missouri Missions Offering Helps Associations

Ten percent of your church's gifts to the Rheubin L. South Missouri Missions Offering is returned to your association to support missions. In 2025, the MBC distributed \$86,498 in such funds, which associational leaders used to support summer missionaries, fund mission trips, start Christian schools, improve camps and other facilities, and much more.



Joshua Hall serves as director of missions for Greene County Baptist Association (GCBA) in southwest Missouri. GCBA has used MMO funds to support Deaf Youth Camp, fund an ethnic pastor Christmas dinner, and bless pastors and wives with nights of fellowship.

"GCBA is grateful for the partnership of the Missouri Baptist Convention," says Hall. "MMO funds allow us to bless and encourage our front-line servants – pastors and wives – in ways that we otherwise could not. Thank you, Missouri Baptists, for investing in the leaders of our churches."



Trent Young serves as director of missions for Gasconade Valley Baptist Association in central Missouri. In a thank-you note to Missouri Baptists, he wrote:

"We are blessed today – we just received our association's MMO funds. Last year, these gifts helped us provide for two summer missionaries who served throughout our association. We were also able to provide for a student from Ukraine to come and serve at our youth camp. We are so thankful for our churches who give to MMO, and we know that their giving makes an impact across our great state!"

MMO
RHEUBIN L. SOUTH
MISSOURI MISSIONS OFFERING



generosity.



How the Cooperative Program Works 1



MISSOURI BAPTISTS AND THE COOPERATIVE PROGRAM

What is the Cooperative Program?

The Cooperative Program (CP) is the funding process Southern Baptists have used since 1925 to support missions at the state, national, and international levels. Through CP, the ministry reach of your church extends around the world.

How does CP work?

The Cooperative Program begins with you – your tithes and offerings to your Missouri Baptist church. Your church, in turn, shares a portion of its annual budget with the Cooperative Program, sending its CP gifts to the Missouri Baptist Convention (MBC), which distributes CP funds from more than 1,700 MBC-affiliated churches according to an approved plan.

This plan supports dozens of ministries in Missouri, across North America, and around the world. On page 11, see how each \$100 your church invests in CP helps churches transform lives and communities with the gospel.

Why give through the Cooperative Program?

CP supports evangelism and discipleship, missions mobilization, church planting and renewal, disaster relief, collegiate ministries, foster care and adoption, ministries to the aged, personal and church stewardship, Christian higher education, North American and international missionaries, ethics and religious liberty – and so much more.

The Cooperative Program enables every giver and every local church to make an impact for Christ at home and across the globe.

In addition, your CP giving comes back to you – in training, events, resources, consultations, church-staff retirement and insurance benefits, and other ministries for the local church.

How the Cooperative Program Works 2

When you give to your church, a portion goes to the Cooperative Program (CP), which advances the gospel in Missouri, across North America, and around the world.

HERE'S HOW CP WORKS, IN THREE EASY STEPS:



1

You give to your local Missouri Baptist church.

2

Your church shares a portion through the Cooperative Program.

3

The combined CP giving of 1,700 Missouri Baptist churches supports ministries across our state, throughout North America, and around the world.

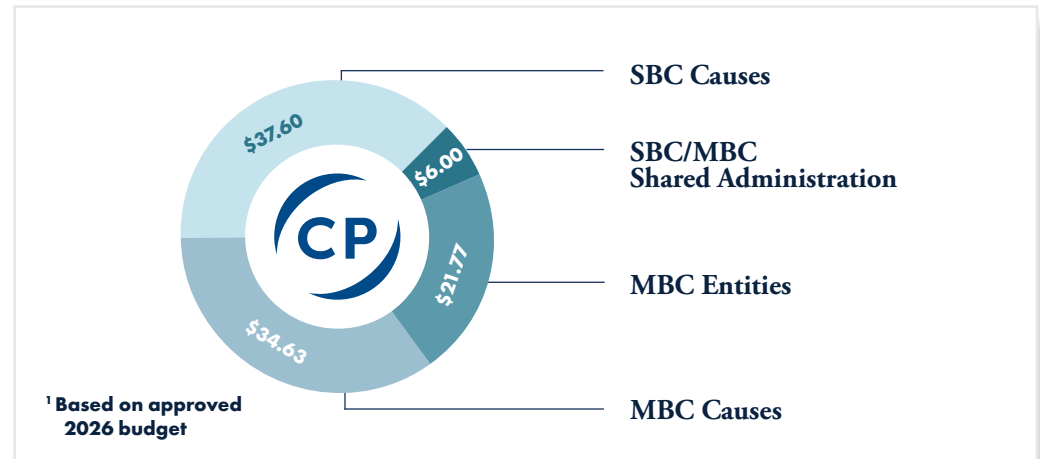
CP enables every giver and every local church to make an impact for Christ.

Learn more about the Cooperative Program at mobaptist.org/cp.

How the Cooperative Program Works 3

HOW YOUR COOPERATIVE PROGRAM GIVING IS INVESTED

When your church gives through the Cooperative Program, here's how each \$100 helps churches transform lives and communities with the gospel:¹



Southern Baptist Causes

\$18.96	International Mission Board
\$8.57	North American Mission Board
\$8.33	Theological Education
\$0.62	Ethics & Religious Liberty Commission
\$1.12	Executive Committee

\$37.60

² These ministries rely on supplemental funds from the North American Mission Board, the Rheubin L. South Missouri Missions Offering, and other designated gifts. Thus, their portions of the consolidated MBC budget are substantially larger than indicated here.

SBC/MBC Shared Administration

\$2.45	GuideStone Pastor Protection
\$2.55	The Pathway
\$1.00	Cooperative Program Promotion
\$6.00	

Missouri Baptist Entities

\$4.62	Missouri Baptist Children's Home
\$15.83	Christian Higher Education
\$0.66	Baptist Homes & Healthcare Ministries
\$0.66	Missouri Baptist Foundation
\$21.77	

Missouri Baptist Causes

\$5.56	Church Planting / Send Missouri, Missions Mobilization, and Disaster Relief ²
\$3.77	Collegiate Ministries ²
\$3.37	Church Renewal, Resound Network, Women in Ministry, and Leader Care ²
\$3.16	Evangelism, Discipleship, and Prayer Ministries ²
\$2.94	Executive Office and Entity Relations
\$5.49	Financial Services, Annual Meeting, and Audit Services
\$3.09	Properties Management of Baptist Building, DR Readiness Center, BSUs, and Vehicles
\$3.34	Communications and Apologetics
\$3.91	Media, Technology, and Live-event Support
\$34.63	



Section 2: **GLOBAL IMPACT**

Your gifts through the Cooperative Program, Annie Armstrong Offering for North American Missions, Lottie Moon Offering for International Missions, and other designated gifts in 2025 helped start new churches, send the gospel to unreached people groups, train future Southern Baptist leaders, and much more.

In this section, we see snapshots of ministry impact across our continent and around the world.



Missouri Baptists' Investment in SBC Causes

Through the Cooperative Program, special offerings, and designated gifts, Missouri Baptists supported numerous Southern Baptist causes in 2025, including the International Mission Board, North American Mission Board, six seminaries, the Ethics & Religious Liberty Commission, the SBC Executive Committee, and more.

Here's the breakdown:

Cooperative Program gifts to the SBC: \$5,820,849

Lottie Moon Offering for International Missions: \$4,017,084

Annie Armstrong Offering for North American Missions: \$2,282,910

SBC Designated Gifts: \$9,339

Total 2025 investment in SBC causes: \$12,130,182

Your gifts make a difference

North American Mission Board (NAMB):

In 2024 (most recent available data), Southern Baptists added 964 new congregations: 767 new church plants, 138 existing churches that affiliated with the SBC, and 59 new church campuses.

Also in 2024, nearly 650 ministry leaders from 488 churches attended Sending Labs, while 400 new church-planting missionaries participated in 53 church planter assessment retreats and two Send Network orientations.

NAMB's 3,100 chaplains presented the gospel 100,084 times in 2024, resulting in 20,455 professions of faith and more than 2,100 baptisms.

Your gifts support 3,299 NAMB missionaries and 3,100 chaplains.

International Mission Board (IMB):

In 2024 (most recent available data), your gifts supported 3,577 missionaries in 155 countries, with a strong emphasis on sharing the gospel with unreached people groups, particularly in South Asia and the Asia-Pacific Rim. The IMB’s work is urgent, since 59 percent of the world today has no meaningful access to the gospel.

As reported by the IMB and national partners, the work of CP-supported missionaries resulted in 144,969 professions of faith in Christ, 68,628 baptisms, 2,409 new churches planted, 84,430 new leaders trained, and 1.6 million who heard the gospel.

In addition, 271,603 people received personal care through human-needs projects, and nearly 1 million viewed digital gospel content in multiple languages.

Send Relief:

In 2024 (most recent available data), Send Relief engaged 32,563 volunteers, served 181,185 people, impacted 2,001 churches, and shared the gospel with 22,115 people.

Southern Baptist Disaster Relief invested 112,000 volunteer days, prepared more than 1.4 million hot meals, presented the gospel 42,225 times, and saw 4,402 people profess faith in Christ.

Seminaries:

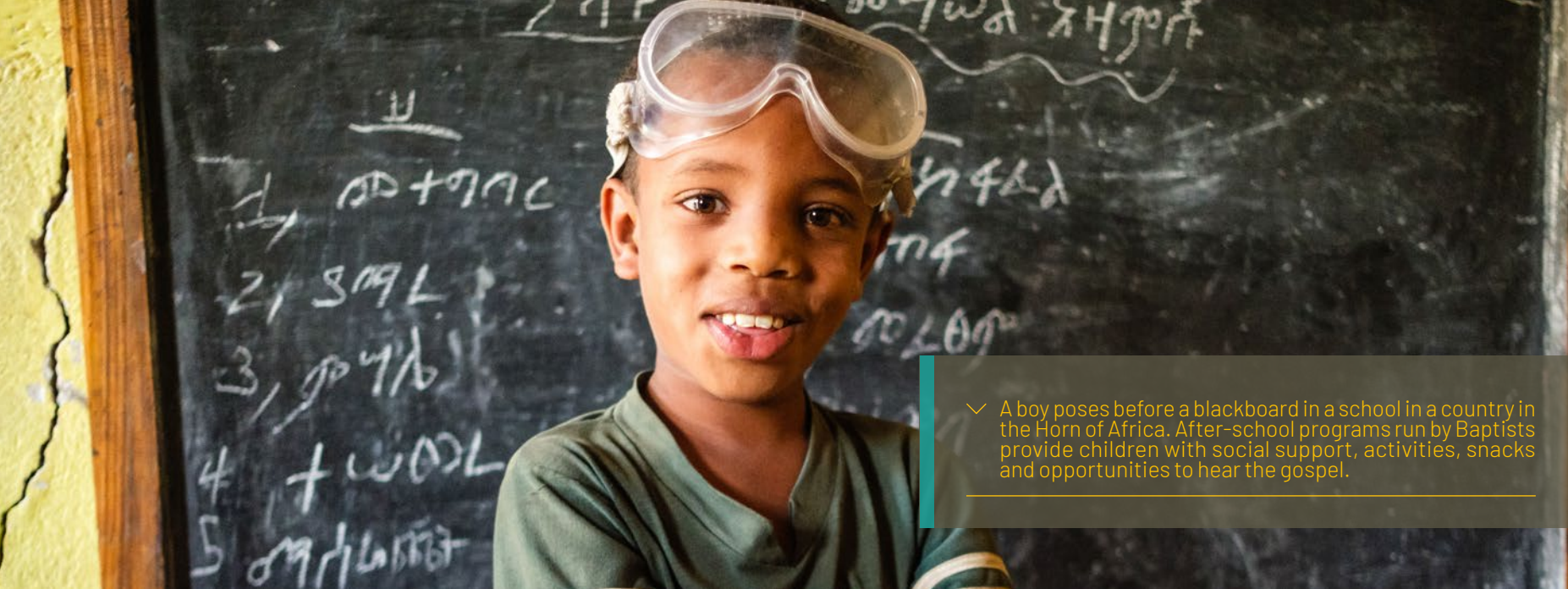
Nearly 25,000 students were trained at the SBC’s six seminaries during the 2023-24 academic year, including 5,416 at Missouri’s Midwestern Baptist Theological Seminary.

Mission Dignity:

More than 2,100 retired ministers, denominational workers, their spouses, and widows received \$10.4 million in assistance in 2024 (most recent available data). Direct donations from individuals, churches, Sunday school classes, and other non-CP sources fund Mission Dignity.

Sources:

2025 North American Mission Board Annual Report; Fast Facts about the Southern Baptist Convention; International Mission Board reports at imborg.



✓ A boy poses before a blackboard in a school in a country in the Horn of Africa. After-school programs run by Baptists provide children with social support, activities, snacks and opportunities to hear the gospel.



✓ Ghanaian pastor Joseph Tia Sugri reads Scripture to church members from Nanyeerl Baptist Church during a baptismal service at a river in northeastern Ghana.

Section 3: MISSOURI BAPTIST CAUSES



Together, we strengthened a wide range of Missouri Baptist ministries. In this section, we see how the Cooperative Program and the Rheubin L. South Missouri Missions Offering fuel prayer and evangelism, missions mobilization, church planting, church renewal ministries, disaster relief, collegiate ministries, and more.

The MBC staff is committed to helping churches transform lives and communities with the gospel.



INTRODUCING: THE MISSOURI BAPTIST CONVENTION

Who We Are

The Missouri Baptist Convention (MBC) is a network of more than 1,700 self-governing Southern Baptist churches that work together to carry out the Great Commission. Missouri Baptists elect an Executive Board that oversees the convention's ministries, which the MBC staff carries out under the direction of an executive director-treasurer.

Missouri Baptists recognize eight regions of ministry in the state and work cooperatively with nearly 60 Baptist associations into which local churches are grouped for more effective ministry.

Missouri Baptist churches faithfully fund MBC ministries through their gifts to the **Cooperative Program**, and through the annual **Rheubin L. South Missouri Missions Offering**.

Our Vision

The Missouri Baptist Convention exists to help churches transform lives and communities with the gospel.

That's the reason the MBC was founded in 1835. And it's the reason Missouri Baptists labor together for this moment in kingdom history.



MISSOURI BAPTISTS

THE MBC MINISTRY PLAN

Our role as a convention staff is to help local churches be faithful to their God-called missions. We carry out our servant role through seven initiatives:



Prayer – a strong statewide prayer ministry that involves every Missouri Baptist and every MBC-affiliated church.



Evangelism – a movement to help our churches refocus and reprioritize their call to take the gospel to the lost.



This includes reaching college students on 30 campuses across our state, and engaging student leaders in missions.



Missions Mobilization – engaging Missouri Baptists in missions at home and around the world.



Missouri Baptist Disaster Relief plays a key role in this initiative.



Church Planting / Send Missouri – through our partnership with the North American Mission Board, we're striving to help churches plant churches that will plant additional churches.



Church Renewal – fostering healthy pastors, healthy churches, and healthy associations through the Resound, Women in Ministry, and Leader Care networks.



Media & Communications – telling the story of what God is doing in Missouri Baptist life through print, web, social media, video, and other media.



Entity Relations – supporting, promoting, and partnering with the Missouri Baptist Children's Home, Baptist Homes & Healthcare Ministries, the Missouri Baptist Foundation, Hannibal-LaGrange University, Missouri Baptist University, and Southwest Baptist University.

LEARN MORE:

 800.736.6227

 [MOBAPTIST.ORG](https://www.mobaptist.org)

Prayer & Evangelism

Through the Cooperative Program, the Rheubin L. South Missouri Missions Offering, and grants from the North American Mission Board, Missouri Baptists supported numerous prayer and evangelism initiatives across our state, including Super Summer, Student Evangelism Conferences, Vacation Bible School training, and Children's ministries.

Here's the breakdown:

Cooperative Program gifts to Prayer & Evangelism: \$377,774
Rheubin L. South Missouri Missions Offering: \$41,500
North American Mission Board: \$200,000

Total 2025 investment in Prayer & Evangelism: \$619,274



Rob Pochek joined the MBC staff in 2025 as team leader for Prayer & Evangelism. He's developing, implementing, and promoting a comprehensive strategy to help Missouri Baptist churches and associations prioritize prayer and evangelism. Look for regional prayer events and a statewide evangelism conference in 2026.

Learn more about Prayer & Evangelism – and how you can get involved.



SCAN HERE



MB Students

Student events resulted in nearly 100 decisions to follow Christ and 35 calls to ministry.

The Prayer & Evangelism Group served more than 2,000 students and leaders across the state during 2025 through events such as Super Summer camps and Student Evangelism Conferences. This resulted in nearly 100 decisions to follow Christ and 35 calls to ministry.

Vacation Bible School specialists hosted 11 training events in 2025 and welcomed 345 in attendance, representing 58 Missouri Baptist churches. Lifeway statistics indicate that in some areas of the U.S., the correlation of salvations to VBS workers trained is 1:1.

Missions Mobilization

Through the Cooperative Program and Rheubin L. South Missouri Missions Offering, Missouri Baptists supported the Missions Mobilization Group, which connects churches to the mission field at home and around the world. This includes partnerships with Bethlehem Christian Academy, The Nations Initiative, and the Montana and Minnesota/Wisconsin state conventions. It also involves the discovery of unreached people groups in Missouri and connecting MBC churches with them.

Here's the breakdown:

Cooperative Program gifts to Missions Mobilization: \$598,243
Rheubin L. South Missouri Missions Offering: \$78,000

Total 2025 investment in Missions Mobilization: **\$676,243**



Martin Winslow serves as team leader for the Missions Mobilization Group. A former missions pastor for Canaan Baptist Church in St. Louis, he's also the founder and president of Bethlehem Christian Academy, which starts Christian schools and plants churches in hard-to-reach places around the world.

Learn more about Missions Mobilization – and how you can get involved.



SCAN HERE



Missions in Malawi

“But you will receive power when the Holy Spirit has come on you, and you will be my witnesses in Jerusalem, in all Judea and Samaria, and to the ends of the earth.” – Acts 1:8

Jesus told us in Acts 1:8, “But you will receive power when the Holy Spirit has come on you, and you will be my witnesses in Jerusalem, in all Judea and Samaria, and to the ends of the earth.” For more than 100 years, Missouri Baptists have obeyed this command and strategically pooled their

resources through the Cooperative Program. As a result, the good news of the gospel is reaching the ends of the earth, including nations like Malawi, where Missouri Baptist volunteers served in 2025.

See the story of volunteers and their message of thanks [in this short video.](#)



Send Missouri

Through grants from the North American Mission Board (NAMB) and the Rheubin L. South Missouri Missions Offering, Missouri Baptists supported Send Missouri, a cooperative effort with NAMB to see healthy, multiplying churches across our state. Led by Jason Zellmer, Send Missouri helped 80 Missouri Baptist churches engage in church-planting ministries in 2025 through Sending Labs and Residency Builder events.

“Because we believe churches plant churches, we come alongside church leaders to help them achieve their goals in multiplication,” says Zellmer.

Here’s the breakdown:

North American Mission Board: \$150,000

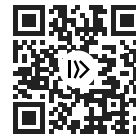
Rheubin L. South Missouri Missions Offering: \$65,000

Total 2025 investment in Send Missouri: **\$215,000**



Jason Zellmer directs the ministries of Send Missouri.

Learn more about NAMB’s Send Network – and how your church can get involved.



SCAN HERE



Over 200 pastors, leaders, church planters, and other believers gathered together for the Send Network One Day event in Kansas City.



 Send Network

Church Renewal

Through the Cooperative Program and Rheubin L. South Missouri Missions Offering, Missouri Baptists supported the ministries of the Church Renewal Group, which fosters healthy pastors, healthy churches, and healthy associations through the Resound, Women in Ministry, and Leader Care Networks.

Here's the breakdown:

Cooperative Program gifts to Church Renewal: \$522,253
Rheubin L. South Missouri Missions Offering: \$89,500

Total 2025 investment in Church Renewal: \$611,753



Buddy Funk serves as team leader for the Church Renewal Group. He's been in ministry for more than 30 years, serving churches across Arkansas and Missouri. He's responsible for equipping and strengthening today's churches and church leaders; discovering the next generation of leaders and preparing them to serve; and mobilizing leaders for kingdom service in every sphere of influence.

Learn more about Church Renewal – and how you can get involved.



SCAN HERE



Resound Summit

Church Renewal leaders assisted 34 churches in intentional renewal processes, and 13 church leaders participated in the Church Revitalization Cohort.

Nearly 200 Missouri Baptist leaders attended the 2025 Resound Summit at Concord Baptist Church in Jefferson City. In addition, Church Renewal leaders assisted 34 churches in intentional renewal processes, and 13 church leaders participated in the Church Revitalization Cohort. Church Renewal trained transitional pastors, assisted churches in finding transitional pastors, and equipped church search committees to engage in the process of finding new pastors.

During the MBC Annual Meeting, 150 attended the Resound Late Night event, while 175 took part in the Women in Ministry event.

Through Leader Care, 52 ministry leaders received more than 100 counseling sessions with seasoned Christian counselors who helped foster spiritual, emotional, and physical health.

Collegiate Ministries

Through the Cooperative Program and Rheubin L. South Missouri Missions Offering, Missouri Baptists supported collegiate ministries on 30 campuses across our state and engaged student leaders in missions.

Here's the breakdown:

Cooperative Program gifts to Collegiate Ministries: \$653,508
Rheubin L. South Missouri Missions Offering: \$142,000

Total 2025 investment in Collegiate Ministries: \$795,508



Jerome Stockert serves as director of Collegiate Ministries. He's been engaged in campus ministry for more than 30 years, serving on campuses in Arizona, Arkansas, and Missouri. He also served in Pennsylvania as a collegiate director for the North American Mission Board, and in Louisiana as a church planter and pastor.

Learn more about Collegiate Ministries – and how you can get involved.



SCAN HERE



Sharing Christ at 2 a.m.

Beach Reach: 3,231 gospel conversations and 110 professions of faith.

A team of 20 Christian students from Missouri Western State University hit the beaches of Panama City, Fla., during Spring Break 2025. But not to party. They joined nearly 700 other student volunteers from 20 different college ministries to give free shuttle rides and share the gospel as part of Beach Reach.

As a result, the Missouri students alone shared the gospel 163 times and led a young man to Christ. In total, there were 3,231 gospel conversations and 110 professions of faith. One volunteer from Missouri Western had been to Beach Reach before – as a party-going student who, by God’s saving grace, returned to share Christ each night from 9 p.m. to 2 a.m.



THE ANNUAL CHURCH PROFILE (ACP)

Did your church complete its ACP Survey?

If not, there's still time to enter your data before the January 31 deadline. Submitting ACP data confirms that your congregation is still active. It provides historical trends to understand your present-day challenges. And it help you identify future opportunities.

For help completing your church's ACP, contact Pam Jeffries at 1-800-736-6227 ext. 337 or pjeffries@mobaptist.org.

ONLINE GIVING

Is Now Available For
Your Church!

Visit mo.sbcworkspace.com and click on the **GIVE** button

Please contact the Business Office at accounting@mobaptist.org or by phone at **1-800-736-6227** if you need your church's SBC Workspace login/password to get started.



Disaster Relief

Through the Cooperative Program, Rheubin L. South Missouri Missions Offering, and designated gifts, Missouri Baptists supported disaster-relief efforts in 2025 that included:

- 33,437 volunteer hours
- 889 cleanup jobs
- 1,774 showers
- 1,041 laundry loads
- 40,630 meals
- 2 professions of faith

Here's the breakdown:

Cooperative Program gifts to Disaster Relief: \$305,081
Rheubin L. South Missouri Missions Offering: \$122,300
Designated gifts: \$477,392

Total 2025 investment in Disaster Relief: \$904,773



Gaylon Moss serves as director of Missouri Baptist Disaster Relief. Prior to coming to Missouri in 2018, he served for nearly 20 years in the same role for the North Carolina Baptist Convention. His work includes disaster-relief readiness, response, and recovery through the effort of more than 1,600 Missouri Baptist volunteers. Together, they seek to help churches transform lives and communities with the gospel by bringing help, hope, and healing.

Learn more about Missouri Baptist Disaster Relief – and how you can get involved.



SCAN HERE



SBC/MBC Shared Administration

Some ministries of the Missouri Baptist Convention and Southern Baptist Convention are so intertwined, and so mutually beneficial, they share Cooperative Program funding. In our state, these ministries include: retirement benefits, life insurance, and disability insurance for church leaders through GuideStone's Pastor Protection program; news and information through the MBC's news journal, *The Pathway* (print and online editions); and promotion of the Cooperative Program, which includes videos, bulletin inserts, posters, ads, children's resources, and this booklet.

Here's the breakdown:

GuideStone Pastor Protection: \$402,394

The Pathway: \$352,001

Cooperative Program Promotion: \$150,879

Total 2025 investment in SBC/MBC Shared Administration: \$905,274

∨ LEARN MORE ABOUT THESE MINISTRIES AT:


GuideStone®
Guidestone.org


MBCPathway.com


Mobaptist.org/cp

Ben Hawkins serves as editor of *The Pathway*, the news journal of the Missouri Baptist Convention. He oversees the news, commentary, and other resources of *The Pathway's* monthly print edition, which reaches nearly 30,000 subscribers, along with the journal's online presence and social media. *The Pathway's* web edition is found at mbcpathway.com.



P

**News on church and
culture from a biblical
worldview**



SCAN HERE

**Subscribe
for free
print
delivery!**

— mbcpathway.com —

THE Pathway

A Cooperative Program Ministry of the Missouri Baptist Convention

Supporting Ministries

In addition to MBC ministries that help churches transform lives and communities with the gospel, many others play supporting roles, ensuring that Missouri Baptists see the greatest possible return from their Cooperative Program investments.

Here's the breakdown:

Executive and Associate Executive Offices / Media & Communications: \$1,654,162

Business Services / Human Resources: \$930,029

Properties Management: \$419,590

Total 2025 investment in supporting ministries: **\$3,003,781**

These ministries include: the Executive and Associate Executive Offices, which provide strategic direction for the MBC staff, coordinate work with the Executive Board, and offer media and communications services that include video, web and social media, graphic design, print services, a secure database for churches, and more; Business Services / Human

Resources, which, among other services, ensure that all financial gifts through the MBC are accurately counted and faithfully distributed according to an approved budget and the directives of individual donors; and Properties Management, which maintains and improves MBC-owned buildings and vehicles.



Samantha Spencer is the MBC's chief financial officer. Serving Missouri Baptists since 2002, she oversees all aspects of the organization's financial health, including budgeting, financial planning, reporting, cash flow management, compliance with regulations, risk management, and ensuring the organization operates efficiently and sustainably by aligning financial practices with the MBC's mission.



Paula Earls is the MBC's chief operations officer. She joined the organization as an administrative assistant in 2016 and was promoted to the role of human resources director. She then became the chief operations officer, organizing the MBC Annual Meeting, managing the insurance needs of the MBC staff, and directing other services.

WHEN YOU GIVE TO YOUR CHURCH,

international students hear the gospel
for the first time.

Your church's generous gifts to the **Cooperative Program** support collegiate ministries on 30 Missouri campuses, and students like Mira* trust in Jesus for eternal life.

** Name changed and photo obscured to protect the identity of this new believer, who may face persecution at home or on campus for her faith.*

mbcollegiate.org

Section 4: **MISSOURI BAPTIST ENTITIES**



Gifts through the Cooperative Program and Missouri Missions Offering reach across our state to support the gospel ministries of six entities affiliated with the MBC: the Missouri Baptist Children's Home, Baptist Homes & Healthcare Ministries, the Missouri Baptist Foundation, Hannibal-LaGrange University, Southwest Baptist University, and Missouri Baptist University.

In this section, we learn more about the benefits of working together to provide forever homes for children, care for the elderly, stewardship planning for churches, and Christian higher education for the next generation.



Missouri Baptist Children's Home

Through the Cooperative Program and the Rheubin L. South Missouri Missions Offering, Missouri Baptists support the ministries of the Missouri Baptist Children's Home.

∨ Here's the breakdown:

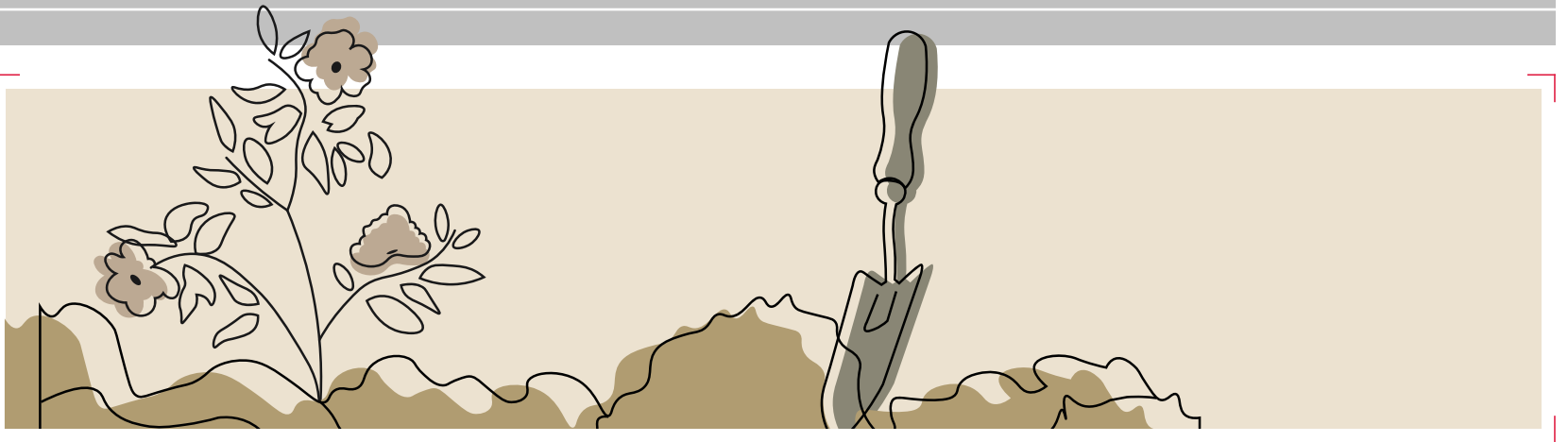
Cooperative Program gifts to MBCH: \$697,061

Rheubin L. South Missouri Missions Offering: \$100,300

Total 2025 investment in MBCH: \$797,361

Learn more about the Missouri Baptist Children's Home – and how to get involved.

mbch.org





The MBCH: *Connecting children, youth, and families to hope, healing, and restoration.*


Since 1886, the Missouri Baptist Children’s Home has been a strategic partner with Missouri Baptist churches, serving God together by responding to the needs of children, youth, and families to make a lasting difference in their lives.

Ministries include foster care and adoption services; therapeutic group homes; pregnancy services; intellectually and developmentally disabled services; family resource

development; transitional living services; counseling; and much more.

As one result of the MBCH’s ministries, Nick Rosenbaum and his daughter, Haley Burden, both became foster parents, and they eagerly share how faith, family, and the support of MBCH helped them welcome children into their homes and show them Christ’s love.



> > > > > > [VIEW THEIR STORY](#) > > > > > > 

Baptist Homes & Healthcare Ministries

Through the Cooperative Program and the Rheubin L. South Missouri Missions Offering, Missouri Baptists support the ministries of Baptist Homes & Healthcare Ministries (BHHM).

∨ Here's the breakdown:

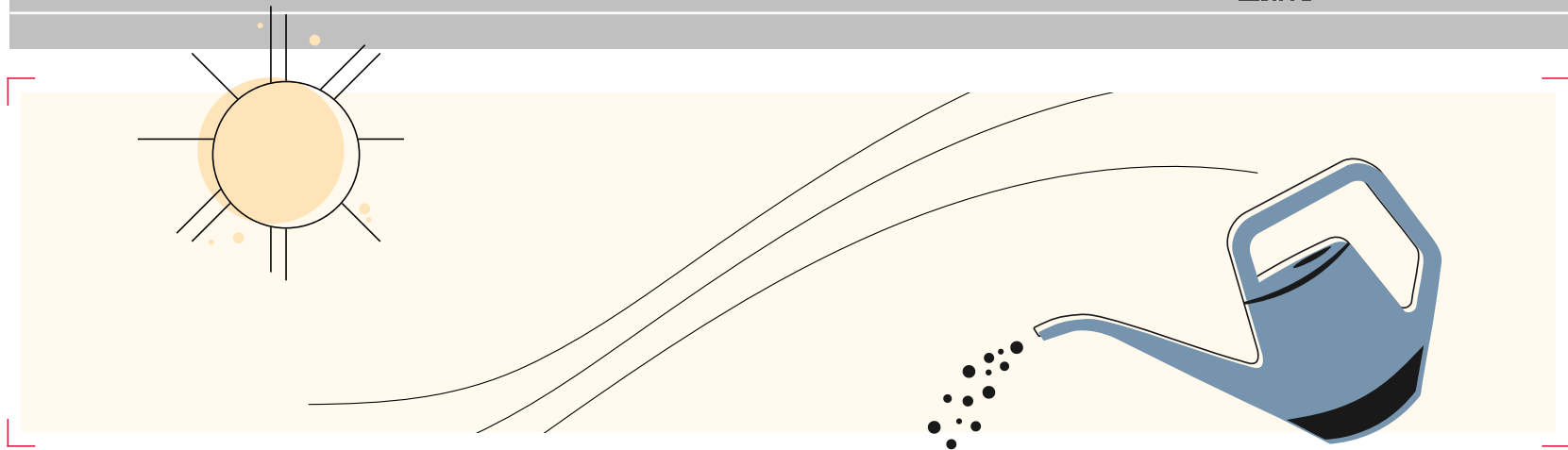
Cooperative Program gifts to BHHM: \$99,580

Rheubin L. South Missouri Missions Offering: \$15,000

Total 2025 investment in BHHM: \$114,580

Learn more about the ministries of Baptist Homes – and how to get involved.

bhhm.org





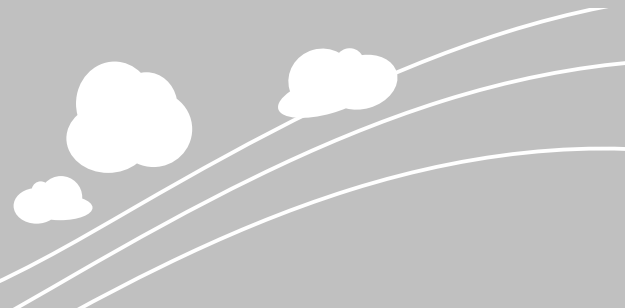
Baptist Homes: *Caring for the aging for the glory of God*

Serving Missouri Baptists for more than a century, Baptist Homes & Healthcare Ministries (BHHM) is a distinctively Christian ministry called to joyfully serve in a Christlike manner by educating, advocating, and caring for the aging for the glory of God. Staff members currently provide care for hundreds of residents across seven Missouri campuses.

The vision of Baptist Homes is to make Christlike ministry the standard of care for the aging community. President Rodney Harrison explains: “Missouri Baptists are committed to supporting each waypoint in life. Baptist Homes provides contextualized care and support to our aging population. Undergirding our mission and philosophy of care is a biblical worldview that informs every aspect of our ministry.”

Baptist Homes provides compassionate, Christlike care through a full continuum of services, from independent living to skilled nursing and memory care.

That mission guides every interaction, decision, and act of service. Residents benefit from worship services and the loving spiritual care of staff members who lead Bible studies and discipleship groups.



Missouri Baptist Foundation

Through the Cooperative Program and the Rheubin L. South Missouri Missions Offering, Missouri Baptists support the ministries of the Missouri Baptist Foundation (MBF).

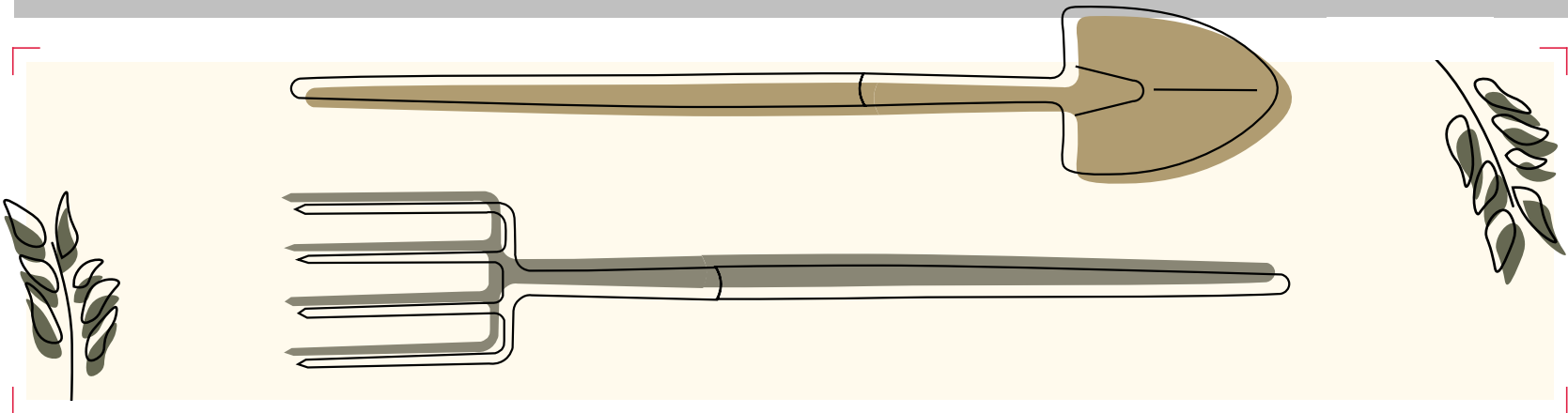
∨ Here's the breakdown:

Cooperative Program gifts to MBF: \$99,580

Rheubin L. South Missouri Missions Offering: \$5,000

Total 2025 investment in MBF: \$104,580

Learn more about the Missouri Baptist Foundation
mbfn.org



Missouri Baptist Foundation: A Lasting Kingdom Impact

A \$5,000 ministry grant from the Missouri Baptist Foundation (MBF) enabled First Baptist Church of Memphis, Mo., to expand its ministry reach. Church members transformed an empty field into a thriving sports complex serving 50 local children who previously had to travel 50 miles for soccer games.

“We are seeing unchurched and dechurched people coming back with their families,” said youth minister Jimmy Bagwell.

MBF has awarded more than \$235,000 in grants to MBC churches since launching the program in 2022. It is just one of many ways the Foundation has developed, managed, and distributed financial resources to support Missouri Baptists’ mission efforts locally and globally since 1946.

MBF provides a broad range of financial services, Money Management for Ministry, and Possibility Planning for People, including asset management, estate and gift planning, trustee support, short- and long-term cash investment options, loan solutions for ministry expansion, and personal planning tools that help individuals steward their resources faithfully.

All with the goal of helping churches, ministries, and individuals maximize the generosity and promote lifelong stewardship, creating a lasting Kingdom impact.



READ THE FULL STORY OF FBC MEMPHIS:



Christian Higher Education



Through the Cooperative Program and the Rheubin L. South Missouri Missions Offering, Missouri Baptists support Christian higher education at three universities: Hannibal-LaGrange University, Southwest Baptist University, and Missouri Baptist University.

∨ Here's the breakdown:

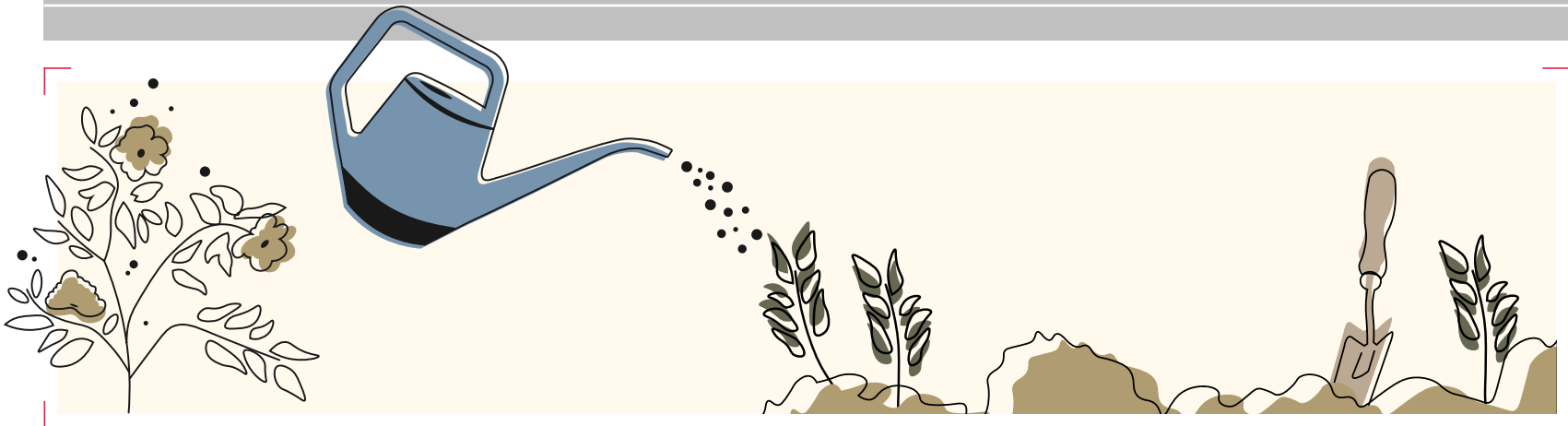
Cooperative Program gifts to Christian higher education: \$2,388,415

Rheubin L. South Missouri Missions Offering: \$20,000

Total 2025 investment in Christian higher education: \$2,408,415

Learn more about how these universities prepare the next generation with a Christian worldview:

> hlgu.edu > sbuniv.edu > mobap.edu





Meet Charlie McKeon

“My deepest desire is to impact the world around me for the sake of Christ.”

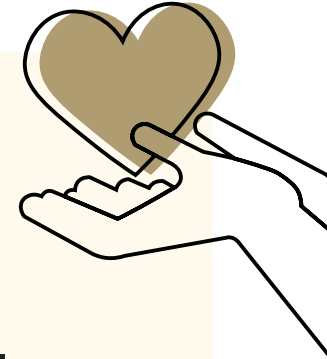
Charlie McKeon is a senior from Wentzville, pursuing a BA in Christian Ministry at HLGU. He’s one of roughly 9,000 students at three MBC-affiliated universities, earning undergraduate and graduate degrees in multiple fields, all taught through a biblical worldview. Students engage on campus, online, and through early college partnerships. And it’s made possible through the generous Cooperative Program giving of more than 1,700 Missouri Baptist churches.

“My deepest desire is to impact the world around me for the sake of Christ,” says McKeon. “Chiefly, I have a soft spot in my heart for seeing the unification of families in the foster care system. I desire to live a radical, gospel-centered life among those families that are struggling and in desperate need of Jesus.”



Thank you, Missouri Baptists

for your faithful support of missions in 2025



COMPARISON OF 2024 vs 2025

Offering	2025	2024	Variance
Cooperative Program	\$15,471,399	\$15,272,771	\$198,628
MMO	\$952,530	\$1,072,207	(\$119,677)
Lottie Moon	\$4,017,084	\$4,293,014	(\$275,930)
Annie Armstrong	\$2,282,910	\$2,356,314	(\$73,404)
Global Hunger	\$170,263	\$145,680	\$24,583

What will God do through you and your church in 2026?
Learn more at mobaptist.org/cp

10 YEAR TOTALS

	CP	MMO	Lottie Moon	Annie Armstrong	Global Hunger	Yearly Totals
2025	\$15,471,399	\$952,530	\$4,017,084	\$2,282,910	\$170,263	\$22,894,186
2024	\$15,272,771	\$1,072,207	\$4,293,014	\$2,356,314	\$145,680	\$23,139,986
2023	\$14,823,030	\$926,010	\$3,984,919	\$2,231,490	\$159,904	\$22,125,353
2022	\$14,700,603	\$990,740	\$4,220,835	\$2,323,265	\$164,692	\$22,400,135
2021	\$15,470,934	\$824,446	\$4,154,582	\$2,410,452	\$178,243	\$23,038,657
2020	\$14,628,637	\$736,628	\$4,009,756	\$1,717,980	\$149,213	\$21,242,214
2019	\$14,833,902	\$821,722	\$4,020,962	\$2,126,888	\$178,119	\$21,981,593
2018	\$14,839,248	\$791,104	\$4,241,514	\$2,248,577	\$174,803	\$22,295,246
2017	\$14,586,054	\$759,920	\$3,624,071	\$2,268,149	\$199,652	\$21,437,846
2016	\$14,522,278	\$705,506	\$4,064,888	\$2,101,851	\$192,969	\$21,587,492
2015	\$14,815,502	\$754,843	\$4,244,074	\$2,147,308	\$205,530	\$22,167,257



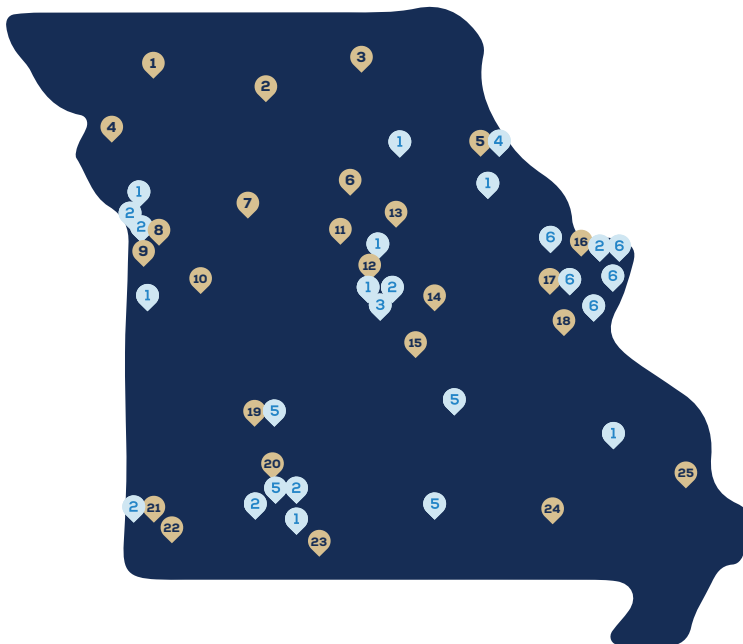
Better Together



Six entities affiliated with the Missouri Baptist Convention serve across our state. Your church's gifts to the Cooperative Program support their ministries.

- 1 **Baptist Homes & Healthcare Ministries - bhhm.org**
Main Office: Jefferson City
Campuses: Adrian, Arcadia Valley, Ashland, Ozark, Shelbina, Smithville, Tri-County
- 3 **Missouri Baptist Foundation - mbfn.org**
Jefferson City
- 5 **Southwest Baptist University - sbuniv.edu**
Main Campus: Bolivar
Campuses: Mountain View, Salem, Springfield

- 2 **Missouri Baptist Children's Home - mbch.org**
Main Office: Bridgeton [St.Louis]
Campuses/Field Offices: Jefferson City, Joplin, Kansas City, Mt. Vernon, Peculiar, Springfield
- 4 **Hannibal-LaGrange University - hlg.edu**
Hannibal
- 6 **Missouri Baptist University - mobap.edu**
Main Campus: St. Louis
Campuses: Arnold, Hillsboro, Troy/Wentzville, Union



Campus Missionaries

- 1 Northwest Missouri State University
- 2 North Central Missouri College
- 3 Truman State University
- 4 Missouri Western State University
- 5 Hannibal-LaGrange University
- 6 Moberly Area Community College
- 7 Missouri Valley College
- 8 University of Missouri - Kansas City
- 9 Kansas City Area
- 10 University of Central Missouri
- 11 University of Missouri
- 12 Lincoln University
- 13 William Woods & Westminster
- 14 State Tech
- 15 Missouri S&T
- 16 Washington University
- 17 Missouri Baptist University
- 18 Mineral Area College
- 19 Southwest Baptist University
- 20 Springfield Area Collegiate Ministries
- 21 Missouri Southern State University
- 22 Crowder College
- 23 College of the Ozarks
- 24 Three Rivers College
- 25 Southeast Missouri State University



Learn more about the Cooperative Program at:
mobaptist.org/cp

There are approximately
300,000 college students in Missouri.



WHEN YOU GIVE TO YOUR CHURCH, YOU SUPPORT THESE COOPERATIVE MINISTRIES:

State Missions



Prayer



Evangelism



Missions Mobilization



Church Planting
SEND Missouri



Church Renewal



Media & Communications



Entity Relations



Collegiate Ministries



Disaster Relief  The Pathway

Christian Higher Education



Hannibal-LaGrange University



Missouri Baptist University



Southwest Baptist University

Benevolent Ministries



Missouri Baptist Children's Home



Baptist Homes & Healthcare Ministries

Legacy Ministries



Missouri Baptist Foundation

National Partners



Executive Committee of the SBC



International Mission Board



North American Mission Board



Ethics and Religious Liberty Commission



Lifeway Christian Resources



GuideStone Financial Services



Gateway Seminary



Midwestern Baptist Theological Seminary



New Orleans Baptist Theological Seminary



The Southern Baptist Theological Seminary



Southeastern Baptist Theological Seminary



Southwestern Baptist Theological Seminary

WHEN YOU GIVE TO YOUR CHURCH,

you help plant new churches in
Missouri.

Your church's generous gifts to the **Cooperative Program** support the work of Send Missouri, which starts new congregations like Antioch Troy, led by pastor and Send Missouri director **Jason Zellmer**.



namb.net/send-network



Missouri Baptist Convention
400 East High Street
Jefferson City, MO 65101-3215



Get Connected, Stay Connected

mbConnect is the Missouri Baptist Convention's free weekly email newsletter. Inside, you'll find timely information regarding Missouri Baptist news and resources.

SIGN UP HERE
mobaptist.org/mbconnect

