



THE NATIONS IN MISSOURI

A PRAYER GUIDE

for the Ethnic Groups in Missouri

“And who is my neighbor?” Luke 10:29 (NIV)





THE NATIONS IN MISSOURI

A PRAYER GUIDE FOR THE ETHNIC GROUPS IN MISSOURI

Copyright © 2023 by the Missouri Baptist Convention. All rights reserved.

All Scripture quotations, unless otherwise indicated, are taken from the Holy Bible, New International Version®, NIV®. Copyright ©1973, 1978, 1984, 2011 by Biblica, Inc.™ Used by permission of Zondervan. All rights reserved worldwide. www.zondervan.com. The “NIV” and “New International Version” are trademarks registered in the United States Patent and Trademark Office by Biblica, Inc.™

INTRODUCTION

“After this I looked, and there before me was a great multitude that no one could count, from every nation, tribe, people and language, standing before the throne and before the Lamb.”

– Revelation 7:9 (NIV)

THE CALL

Jesus calls the church to carry the gospel to “the ends of the earth” (Acts 1:8 NIV). He also commands us to love our neighbors (Mark 12:31). For Missouri Baptists, these tasks grow more intertwined every day. Who are our neighbors? They include wait staff at the Mexican restaurant, Somali women at the grocery store, Russian families whose children go to school with our own, and refugees whom God has delivered into our care.

The work ahead is daunting, but we are not alone. Christ promises to go with us (Matthew 28:20), and churches can work together to accomplish the Great Commission.

God is bringing the ends of the earth into our neighborhoods. We must not ignore this fantastic opportunity for missions.

THE NATIONS HAVE COME TO MISSOURI

First-generation immigrants and their children make up eight percent of Missouri's population. This means that roughly one out of every twelve people living in Missouri is an immigrant. Seven percent of Missourians speak a language other than English in their home. In addition, there are almost ninety-five thousand immigrants living just outside the state in the Kansas City and St. Louis metropolitan areas.

Missouri Baptists do not have to leave the state to take the gospel to the nations.

THE PURPOSE OF THIS GUIDE

This guide directs churches to recognize the nations God is sending to Missouri, and to pray: "To whom shall we go?" Involvement in international missions is no longer a question of staying home or going overseas. It is now a task for those who go and those who remain. The Holy Spirit is guiding Missouri Baptists to make disciples of all nations.

CONSIDER THESE CHALLENGES...

CHALLENGE 1: ADOPT A PEOPLE GROUP

*Of the 50 largest immigrant communities in Missouri, 3 countries are unreached (under 2% Christian), 9 countries are closed (it is illegal to share the gospel), and 17 are both. **Immigrants from these countries now live in the freest nation on earth.***

6 FOR 10

It would only take six percent of Missouri Baptist churches becoming involved in cross-cultural outreach for each closed/unreached group to have ten sponsoring congregations. This level of commitment would make significant progress toward transforming immigrant lives and communities with the gospel.

Adopting a people group requires dedication to reaching their people for Jesus Christ. It includes sending local missionaries and mission teams across the street, town, and state. It necessitates developing a strategy of engagement, evangelism, church planting, leadership development, and partnership.

HOW WILL PEOPLE IN OUR CHURCH SERVE?

There is an opportunity for service among the nations in Missouri for all types of people in your church.

LONG-TERM MISSIONARIES

Some members of your church will be called by God to live near or among an immigrant community. Like missionaries overseas, they will build deep relationships with the community, learning about the people, culture, and perhaps language. These efforts will be intentionally directed toward sharing the gospel. They grow roots and stay long.

MID-TERM MISSIONARIES

Other members of your church will be called to spend a season working alongside long-term missionaries or immigrant churches. These members will provide relief for those who are there over the long haul, and provide additional points of contact between your church and its adopted group.

SHORT-TERM MISSIONARIES

Still more members of your church will be called to visit long and mid-term missionaries in their mission field. Their purpose might include personal support, VBS, or community projects. These brothers and sisters will keep your church connected to your adopted group and missionary members.

CHALLENGE 2: PARTNER WITH AN ETHNIC CHURCH

Not every church will be called to go, but every church has the means to help.

SUPPORT EXISTING MINISTRIES

There are many ethnic churches in Missouri striving to reach their communities with the gospel, and Missouri Baptist churches can support their missionary efforts in various ways.

Partnering with ethnic churches could involve sending volunteers to help with VBS or partnering

to do a community outreach event. It may involve financially supporting the pastor of an ethnic church or an ethnic church planter. Perhaps your church could share its building with an ethnic congregation. The possibilities are as numerous as the needs of the ethnic church and the particular gifts of your own.

Is God calling your church to provide volunteers, resources, and encouragement to our brothers and sisters in Christ as they evangelize their neighbors?

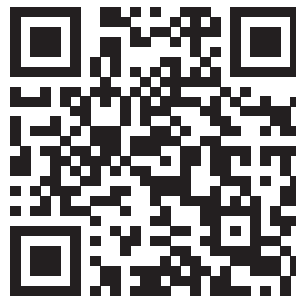
NEXT STEPS

As the Lord leads you to pray for the people groups in this booklet, know that you are not alone in the work of the Great Commission. The Missouri Baptist Convention has personnel and resources available to help your church. The MBC stands ready to help your church consider its next steps in reaching the nations living in Missouri.

You may contact us in the following ways: (1) through the form available at <https://mobaptist.org/nations>, (2) by calling us at 800-736-6227, or (3) by mailing the response sheet at the back of this booklet to the following address:

Multiplying Churches

Missouri Baptist Convention
400 E High Street
Jefferson City, MO 65101



**FIND OUT
MORE ONLINE**

TABLE OF CONTENTS

LOCATIONS

China/ Taiwan	9	Nepal	18
Japan	10	Pakistan	19
South Korea	11	Afghanistan	20
Laos	12	Iran	21
Myanmar	13	Iraq	22
Philippines	14	Jordan	23
Thailand	15	Syria	24
Vietnam	16	Congo	25
India	17	Ethiopia	26

PRAYING FOR OUR NEIGHBORS FROM OTHER NATIONS

Ghana	27	Italy	37
Kenya	28	Poland	38
Nigeria	29	Russia	39
Somalia	30	Ukraine	40
Brazil	31	Other Nations	41
Jamaica	32	Attributions	43
Latin America	33		
Bosnia/Herzegovina	35		
Germany	36		



CHINA/TAIWAN: East Asia

STATUS: Closed

POPULATION IN MISSOURI: 22,329/3,561

CHRISTIAN/EVANGELICAL: 9.2%, 7.6% /6.3%, 3.3%



Summary

Chinese religious practices include ancestor worship, folk religion, and Buddhism. Many Chinese embrace atheism or do not identify with a particular religion. Even so, many in this category remain spiritually active and engage in religious activities, such as meditation and maintaining shrines in their homes.

Prayer requests

- Pray that American Christians build relationships and share the gospel with Chinese people.
- Pray for new and existing Chinese churches to remain strong and start new church plants in Missouri.
- Pray for God to lead churches to develop intentional church planting strategies that focus on Mandarin Chinese speakers.



JAPAN: East Asia



STATUS: Unreached

POPULATION IN MISSOURI: 2,507

CHRISTIAN/EVANGELICAL: 2.2%, .57%

Summary

Japanese immigrants come to the US to pursue education and work. While many follow a traditional blend of Shintoism, Buddhism, and animism, most Japanese are very career minded. There is an intense cultural pressure to study hard, work long, and achieve much. These efforts often produce the appearance of success while masking the severe spiritual needs of their communities.

Prayer requests

- Pray that the Holy Spirit removes the blinders of worldly pursuits and reveals the need for Jesus among the Japanese.
- Pray that American churches recognize the need and devote themselves to reaching the Japanese.
- Pray that the Japanese church receives strength and is faithful to the Great Commission.



SOUTH KOREA: East Asia

STATUS: Open/Reached

POPULATION IN MISSOURI: 9,017

CHRISTIAN/EVANGELICAL: 30%, 16.4%



Summary

Most Koreans in the United States come from South Korea, but the community has roots in both the North and South. Buddhism, Confucianism, and shamanism are the traditional religions of Korea, but Christianity has gained a foothold through the consistent missionary efforts of the last two centuries. Most Korean immigrants are Evangelical Christians, including Baptists, Methodists, and Presbyterians.

Prayer requests

- Pray that Korean Christians take the gospel to the nations surrounding them in the United States.
- Pray that Korean Christians resist the influence of secularism and materialism and remain passionate about their faith.
- Pray for Korean Christian communities to send missionaries to other nations.



LAOS: Southeast Asia



STATUS: Closed

POPULATION IN MISSOURI: 2,262

CHRISTIAN/EVANGELICAL: 3.8%, 2.5%

Summary

The label “Laotian” has little cultural meaning. The Laotian government recognizes 49 ethnic groups in the country, but other estimates place that number closer to 200. The religious details of each group vary. Laotian peoples first came to Missouri in significant numbers after the Vietnam war. Despite coming to the United States for a better future, many live in poverty, often leaving school to find work to help make ends meet.

Prayer requests

- Pray that American churches see the lostness of Laotian peoples and develop a desire to take the gospel to them.
- Pray that churches from nearby cultures begin to work cross-culturally to engage Laotian peoples for Christ.
- Pray that American churches partner with ethnic churches that are near-culture to Laotian peoples to see them reached.



MYANMAR: Southeast Asia

STATUS: Closed

POPULATION IN MISSOURI: 3,668

CHRISTIAN/EVANGELICAL: 8.1%, 4.8%



Summary

There are eight primary people groups in Myanmar. The majority who have come to America are from the Chin and Karen tribes, which fled political and religious persecution by the Buddhist government. Others are Burmese Muslims (separate from the Rohingya) who fled similar persecution. There are Burmese believers and churches, but cults and worldly worries are a source of concern.

Prayer requests

- Pray for God to guide Burmese church leaders as they shepherd those in their care.
- Pray that American churches partner with Burmese churches to reach the world for Jesus.
- Pray that the Holy Spirit softens Burmese Muslims to the gospel and that churches would be faithful to seek them out and share.



PHILIPPINES: Southeast Asia



STATUS: Open/Reached

POPULATION IN MISSOURI: 13,154

CHRISTIAN/EVANGELICAL: 91%, 14%

Summary

The Tagalog people of the Philippines are among the largest Asian populations in the United States. Tagalog is the third most widely spoken foreign language in US households. Tagalog speakers account for about one-in-five Asian Americans. The majority are believers, but younger generations are wrestling with religion-as-culture.

Prayer requests

- Ask God to give Tagalog churches the boldness to share the gospel with their people.
- Pray for Tagalog believers to evangelize across cultures among unreached people groups in the United States.
- Pray that American churches partner with Filipino churches to reach the nations.



THAILAND: Southeast Asia

STATUS: Closed/Unreached

POPULATION IN MISSOURI: 3,476

CHRISTIAN/EVANGELICAL: 1.3%, .7%



Summary

Thai immigrants entered the United States in greater numbers after the Vietnam War. Initially, only the educated upper class could come, but as US relations with Thailand strengthened, immigration became possible for more people. The Thai people adhere to Theravada Buddhism and build temples wherever they go. Older generations hold to their religion fervently, but younger Thai are more secular.

Prayer requests

- Pray that the truth of Christ would prevail over the lies of Buddhism in the hearts of the Thai people.
- Pray that American churches would make it their mission to see new believers and new churches in the Thai diaspora.
- Pray that believers from near-cultures would begin to engage the Thai community.



VIETNAM: Southeast Asia



STATUS: Closed

POPULATION IN MISSOURI: 13,036

CHRISTIAN/EVANGELICAL: 10.2%, 2.2%

Summary

The first wave of Vietnamese immigrants came to the US after fleeing the Vietnam War. Since arriving, they have integrated heavily into society and tend to be upwardly mobile. They are divided between Roman Catholicism and Buddhism and distrust Evangelicals sharply.

Prayer requests

- Pray that churches would send people to reach the Vietnamese community.
- Pray for the Vietnamese church to be faithful in sharing the gospel with their own people.
- Pray for churches to partner with the Vietnamese church to reach unbelieving Vietnamese.



INDIA: South Asia

STATUS: Closed/Unreached

POPULATION IN MISSOURI: 33,109

CHRISTIAN/EVANGELICAL: 2.3%, Unknown



Summary

Indians constitute one of the largest foreign-born populations in Missouri. Most Indians in the US are highly educated and live toward the middle or upper-class of the economic scale. Affluence and social position are barriers to the gospel because fewer felt needs exist. Nearly 80% of Indians are Hindu, and their religious retention rate is also 80%.

Prayer requests

- Pray that American believers would receive a heart to see the Indian population reached.
- Pray that the Holy Spirit would soften the hearts of the Indian people.
- Pray that Indian believers are courageous in sharing the gospel with other Indians.



NEPAL: South Asia



STATUS: Closed/Unreached

POPULATION IN MISSOURI: 2,034

CHRISTIAN/EVANGELICAL: 3.8%, Unknown

Summary

Nepalis immigrate to the United States in search of a better life, and they often work 12-hour days, six days a week, to make this happen. These extended hours make building relationships difficult. Despite this, the community is hospitable and tight-knit, meaning those who take time to build relationships have more opportunities to share. The Nepali people are Hindu, but there are a few Nepali believers.

Prayer requests

- Pray for American believers to hear God's call to invest in building gospel-centered relationships with their Nepali neighbors.
- Pray that American churches send missionaries to the Nepali diaspora.
- Pray for Nepali believers to be strengthened and encouraged to share their faith with their community.



PAKISTAN: South Asia

STATUS: Closed/Unreached

POPULATION IN MISSOURI: 3,773

CHRISTIAN/EVANGELICAL: 1.1%, Unknown



Summary

The Pakistani community is hard-working and mindful of their careers. Pakistanis are devout Muslims and are passionate about their religion. They are active in both observance and evangelism. In this, their passion and their education yield fruit. There are few Pakistani believers and a great need for the gospel in these communities.

Prayer requests

- Pray that God would save many Pakistanis who labor to convert Christians and that they begin to use their energy in His service.
- Pray for American believers to share boldly with their Pakistani coworkers.
- Pray for churches to yearn to reach the Pakistani people for Christ.



AFGHANISTAN: Central Asia



STATUS: Closed/Unreached

POPULATION IN MISSOURI: 2,200

CHRISTIAN/EVANGELICAL: .02%, .02%

Summary

While some immigrated before the US military withdrawal in 2020, most Afghans in Missouri labored beside US troops and were forced to flee. The Afghan community contains two language groups: Dari and Pashto. Because their nation is hostile to Christianity, this is the first chance many have had to hear the gospel without fearing for their lives.

Prayer requests

- Pray that churches would share the love and compassion of Christ with their new Afghan neighbors.
- Pray that the Holy Spirit would open the hearts of Afghan refugees to the Good News of Jesus Christ.
- Pray that believers would make it their mission to see churches planted among the Afghans.



IRAN: Central Asia

STATUS: Closed/Unreached

POPULATION IN MISSOURI: 2,585

CHRISTIAN/EVANGELICAL: 1.9%, .5%



Summary

A wave of Iranian immigrants came to the US in the 1970s after the fall of the Shah. Most Iranians are Shiite Muslims, with others being Baha'i or Zoroastrian. The Baha'i have been particularly evangelistic since their arrival. Despite being only .5% Evangelical Christian, Iran is home to one of the fastest-growing churches in the world. Iranian believers face intense persecution in both Iran and Iranian communities worldwide.

Prayer requests

- Pray that the Iranian church continues to grow in Iran and the wider world.
- Pray that Iranian believers would plant churches that reach other Iranians.
- Pray for churches to partner together to see churches planted in the Iranian community.



IRAQ: Middle East



STATUS: Closed/Unreached

POPULATION IN MISSOURI: 3,663

CHRISTIAN/EVANGELICAL: 1.7%, .4%

Summary

Iraqis have been coming to the United States for decades due to conflict and war in their homeland. Islam is the dominant religion, comprised of 60% Shiite and 40% Sunni. Refugees arrive with skills and education but struggle to find jobs due to barriers in language and credentials. There are few Iraqi believers and even fewer evangelistic churches trying to engage Iraqis.

Prayer requests

- Pray that God would give boldness to Christians to share with the Iraqi people.
- Pray that God would bless the work that Iraqi believers are trying to do among their people.
- Pray that churches would rise to meet the spiritual need of the Iraqis.



JORDAN: Middle East

STATUS: Closed/Unreached

POPULATION IN MISSOURI: 1,942

CHRISTIAN/EVANGELICAL: 1.9%, .5%



Syrian Refugees crossing the border to Jordan to escape war.

Summary

Jordanians began coming to the US in the 1970s when a civil war erupted in their own country. With each passing generation, more Jordanians join their family members on American soil. Jordanians in the United States are generally college-educated, working professionals. Their relative financial mobility means fewer felt needs exist in their communities. Jordanians are predominantly Sunni Muslims, with few Christians among them.

Prayer requests

- Pray that spiritual hunger would haunt the hearts of Jordanians and cause them to seek the truth.
- Pray for American churches to adopt and engage the Jordanian population in Missouri.
- Pray that American Christians would begin to share the gospel with their Jordanian coworkers.



SYRIA: Middle East



STATUS: Closed/Unreached

POPULATION IN MISSOURI: 1,579

CHRISTIAN/EVANGELICAL: 5.7%, .2%

Summary

Syrians often seek refuge in the United States to flee political oppression and religious extremism. Unfortunately, their American neighbors often mistrust and fear them. As Syrian immigrants try to make a home for themselves, they often find acceptance only among their own people and local mosques. American Christians must set aside suspicion if we desire to reach Syrians with the gospel.

Prayer requests

- Pray for American believers to see Syrians as neighbors who need Jesus and to treat them with compassion.
- Pray that Syrian believers will find resources for discipleship and encouragement to share their faith with their neighbors.
- Pray for Christians from Muslim backgrounds to engage Syrian refugees faithfully.



DRC: Central Africa

Democratic Republic of Congo

STATUS: **Closed**

POPULATION IN MISSOURI: **2,048**

CHRISTIAN/**EVANGELICAL**: **91.7%, 19.2%**



Summary

Since the 1960s, 5.4 million people have died in the Democratic Republic of Congo due to warfare and sectarian violence. Congolese refugees in the US often seek work where manufacturing jobs are available. While the Congolese are predominantly Christian, there is still a significant portion that needs to hear about the love and forgiveness of Christ.

Prayer requests

- Pray that God safeguards Congolese churches against false teaching and helps them to be steadfast in their faith.
- Pray that American churches partner with their Congolese brothers and sisters to see more Congolese immigrants come to Christ.
- Pray that the Congolese church would begin to witness cross-culturally to ethnic groups with fewer dedicated believers.



ETHIOPIA: East Africa



STATUS: Closed

POPULATION IN MISSOURI: 3,813

CHRISTIAN/EVANGELICAL: 58.4%, 18%

Summary

Ethiopian immigrants began coming to America in the 1970s due to a war with Somalia and ongoing drought. Their numbers increased by almost a million people when Congress passed the Refugee Act of 1980. Religious differences divide Ethiopia with a split between Islam and Orthodox Christianity. While there are some Evangelicals among Ethiopian immigrants, there is still a great need to reach their communities with the gospel.

Prayer requests

- Pray that Ethiopian believers will continue engaging their fellow immigrants with the gospel.
- Pray that God will strengthen Ethiopian churches and help them to be spiritually healthy.
- Pray that American believers support the planting of Ethiopian churches in Missouri.



GHANA: West Africa

STATUS: Open/Reached

POPULATION IN MISSOURI: 2,059

CHRISTIAN/EVANGELICAL: 62.4%, 25.9%



Summary

Ghanaians are one of the newest immigrant populations in the US, with nearly 60% coming after 2000. They are also one of the youngest immigrant demographics. The average age of a second-generation Ghanaian American is 15. Ghanaians come to the US for work and education. The majority religion is Christianity, with a quarter being Evangelical. Even so, Islam is a growing presence in the community.

Prayer requests

- Pray that American churches will partner with Ghanaian believers to see new Ghanaian churches planted in Missouri.
- Pray for the Holy Spirit to move Ghanaian believers to reach out to their own people and those of similar cultures.
- Pray that the spread of Islam would halt in Ghanaian communities, both in Ghana and around the world.



KENYA: East Africa



STATUS: Open/Reached

POPULATION IN MISSOURI: 6,636

CHRISTIAN/EVANGELICAL: 80%, 49.7%

Summary

Kenyans migrate to Missouri seeking education, employment, and connection with the state's growing Kenyan community. Most Kenyans are Christian, but around 20% are Muslim. Some large Kenyan churches are reaching out to neighboring cultures, but the need to promote spiritual health and guard against false teachings is ever-present.

Prayer requests

- Pray that the Kenyan church moves cross-culturally to reach similar people groups with the gospel.
- Pray that American churches will partner with Kenyan believers to reach the nations.
- Pray that God protects Kenyan churches from false teaching like the prosperity gospel.



NIGERIA: West Africa

STATUS: Open/Reached

POPULATION IN MISSOURI: 3,969

CHRISTIAN/EVANGELICAL: 51.2%, 25.8%



Summary

Nigerians were among the first African peoples to immigrate to Missouri in large numbers, with nearly a quarter being Evangelical. Nigerian believers worship in churches throughout the state, particularly in St. Louis and Kansas City. The spread of Islam in their home country is a significant concern for Nigerian believers in America.

Prayer requests

- Pray for Nigerian believers to soften toward Muslims and passionately share the gospel with them.
- Pray that the Nigerian church resists false teaching.
- Pray that American churches partner with their Nigerian brothers and sisters to reach the nations.



SOMALIA: East Africa



STATUS: Closed/Unreached

POPULATION IN MISSOURI: 2,015

CHRISTIAN/EVANGELICAL: .03%, .02%

Summary

Somalis have fled wars in their home country since 1990 and now make up the largest African community in Missouri. While census data reports about 2,000 Somali residents, refugee agencies estimate the number to be near 13,000. Most Somalis are Muslim and often incorporate folk traditions into their worship practices. Somalis are hard-hearted toward the gospel, and many fear coming into contact with a Bible will invite evil spirits into their lives.

Prayer requests

- Pray that the light of Christ will replace the darkness of fear in Somali hearts.
- Pray for American believers and churches to rise to the challenge of reaching the Somali people for Christ.
- Pray that the few Somalis who are believers would be bold in the Spirit to share the gospel with their people.



BRAZIL: South America

STATUS: Open/Reached

POPULATION IN MISSOURI: 3,107

CHRISTIAN/EVANGELICAL: 89.8%, 24.9%



Summary

Brazilian immigrants began coming to America in the 1980s, but nearly two-thirds of those currently in the US have entered since 2017. Wages for laborers in the United States are four to five times higher than most jobs in Brazil. Education is common among Brazilian immigrants, with 42% having a 4-year degree or better. They are roughly 75% Roman Catholic and 25% Evangelical, although many are nominal or practice folk religion.

Prayer requests

- Pray that Brazilian believers would be a great witness to their communities and those from similar cultures.
- Pray that the Holy Spirit would call American believers to evangelize and disciple Brazilian immigrants.
- Pray that God would inspire American churches to help start Brazilian churches in Missouri.



JAMAICA: Caribbean



STATUS: Open/Reached

POPULATION IN MISSOURI: 2,850

CHRISTIAN/EVANGELICAL: 81.4%, 29.8%

Summary

There is no middle class in Jamaica. One is either rich or poor. Many who get the opportunity to come to the US are quick to take it. The Jamaican community in America is diverse, including business professionals, college students, and track stars. Jamaicans in Missouri live all along the I-70 corridor and are known for jerk chicken and wearing vibrant colors. Evangelicals make up 30% of the Jamaican population, with another 50% identifying as Roman Catholic.

Prayer requests

- Pray that Jamaicans would be a mobilizing force in their churches for cross-cultural evangelism and church planting.
- Pray that American believers seek deeper relationships with Jamaican immigrants.
- Pray that American churches would build bridges with their Jamaican neighbors and find many opportunities to preach the gospel.



LATIN AMERICA & Hispanics

Summary

There are over 100,000 first-generation Hispanic immigrants in Missouri. Some are fleeing religious persecution from their home governments. Others are escaping war between political and/or criminal factions. Still others are seeking economic opportunities to provide for their families. While most claim Catholicism as their religion, few are devout, and many incorporate folk religion into their daily lives.

Prayer requests

- Pray that God calls nominal believers into a genuine relationship with Him.
- Pray that Hispanic churches will continue to preach boldly and evangelize their communities.
- Pray that American churches partner with their sister churches to fulfill the Great Commission.



Country	Population in MO	% Christian	% Evangelical
Mexico	68,920	95.3%	10.5%
Guatemala	9,309	95.3%	25%
Honduras	6,959	95.7%	27.5%
El Salvador	5,098	94.5%	44.9%
Cuba*	3,415	56.2%	11.3%
Colombia*	3,263	93.6%	10.7%
Peru	1,811	94.1%	14.1%
Venezuela*	1,992	82.6%	12.2%
Total	100,767	*Closed	



BOSNIA/HERZEGOVINA:
Eastern Europe

STATUS: Closed/Unreached

POPULATION IN MISSOURI: 9,144

CHRISTIAN/EVANGELICAL: 40.9%, .2%



Summary

Bosniaks (Muslim Bosnians) came to the US in the mid-1990s after ethnic cleansing broke out in their home country. While census data records around 10,000 first-generation Bosniaks in Missouri, refugee organizations estimate the total population to be between 60,000 and 130,000. Bosniaks are one of Europe's least-reached people.

Prayer requests

- Pray that God softens the hearts of Bosniaks and makes them receptive to the gospel.
- Pray that God calls Missouri Baptist churches to plant new congregations among their Bosniak neighbors.
- Pray that God strengthens the few Bosniak believers and encourages those working to serve them.



GERMANY: Western Europe



STATUS: Open/Reached

POPULATION IN MISSOURI: 8,839

CHRISTIAN/EVANGELICAL: 61.3%, 2.1%

Summary

Germans have been coming to Missouri since the 1830s, spurred by poetic descriptions of the state. These educated, skilled workers could afford the trip across the Atlantic, and today's German immigrants have a similar socio-economic class. Their post-modern worldview and success cause them to believe that Christianity is outdated. They see religion as private and consider evangelism rude. Because Germans value actions above words, Christians must demonstrate their faith to gain a hearing.

Prayer requests

- Pray that God would soften the hearts of German immigrants to the gospel.
- Pray that the American church would present a living witness to the German communities in their midst.
- Pray that the Holy Spirit would give German Christians the zeal to share their faith with their neighbors.



ITALY: Southern Europe

STATUS: Unreached

POPULATION IN MISSOURI: 2,003

CHRISTIAN/EVANGELICAL: 81.3%, 1.5%



Summary

Italians began immigrating to Missouri in the 1880s. St. Louis is famous for The Hill, an Italian neighborhood that began in the mid-1950s. New Italian immigrants tend to be the family of current residents. Italians are predominantly Roman Catholic, but like many immigrant groups in the US, younger generations are more nominal and worldly. Their faith is more a part of their culture than their personal identity.

Prayer requests

- Pray that cultural Christianity's prevalence would not discourage Italian believers and prevent them from sharing the gospel.
- Pray that nominal believers would experience genuine rebirth through the Holy Spirit.
- Pray that American churches would work with Italian believers to reach the lost in Italian communities.



POLAND: Eastern Europe



STATUS: Unreached

POPULATION IN MISSOURI: 1,642

CHRISTIAN/EVANGELICAL: 89.5%, .3%

Summary

Like other Eastern European peoples, Poles began coming to the US to escape the rise of communism and its fallout. Today they immigrate for work and education. Most are Roman Catholic, but polling indicates that almost half are nominally affiliated and biblically illiterate. Younger generations are turning to mysticism, New-Age beliefs, and secularism.

Prayer requests

- Pray for believing Poles to be encouraged to speak to their neighbors and share the gospel.
- Pray that the Holy Spirit convicts nominally religious Poles of their need for true conversion.
- Pray that American churches would partner with their Polish brothers and sisters to reach Polish communities in the US.



RUSSIA: Eastern Europe

STATUS: Closed/Unreached

POPULATION IN MISSOURI: 4,398

CHRISTIAN/EVANGELICAL: 57.6%, 1.5%



Summary

Many Russians fled to America to escape communism or the economic collapse of the Soviet Union. The Russian Church remained strong through persecution and is growing among Russian communities in Missouri. There are many Russian-speaking churches in the state and even whole Russian denominations. Despite this, there is a continued need for evangelism among Russian immigrants, and secularism tempts the next generation.

Prayer requests

- Pray for God to strengthen Russian churches in their faith as they work to reach their people and preserve the next generation for Christ.
- Pray that Russian believers are more intentional in cross-cultural outreach.
- Pray that American churches join their Russian brothers and sisters to reach the nations in Missouri.



UKRAINE: Eastern Europe



STATUS: Open/Reached

POPULATION IN MISSOURI: 3,430

CHRISTIAN/EVANGELICAL: 72.8%, 3.6%

Summary

Ukrainians began immigrating to the US after the fall of the Soviet Union. There are two evangelical seminaries in Ukraine, but most Ukrainians are Orthodox. Ukraine is currently at war with Russia, and many more Ukrainians are entering the country as refugees. Those already here are now burdened with concern for loved ones in Ukraine. In Missouri, most Ukrainians and Russians attend the same local churches.

Prayer requests

- Pray that churches containing both Ukrainians and Russians remain unified in this time of division and war.
- Pray that American churches bring the comfort and hope of Jesus to mourning Ukrainian immigrants.
- Pray for God to call American churches to partner with their Ukrainian counterparts to proclaim His greatness to the nations.



OTHER NATIONS IN MISSOURI

Smaller Populations

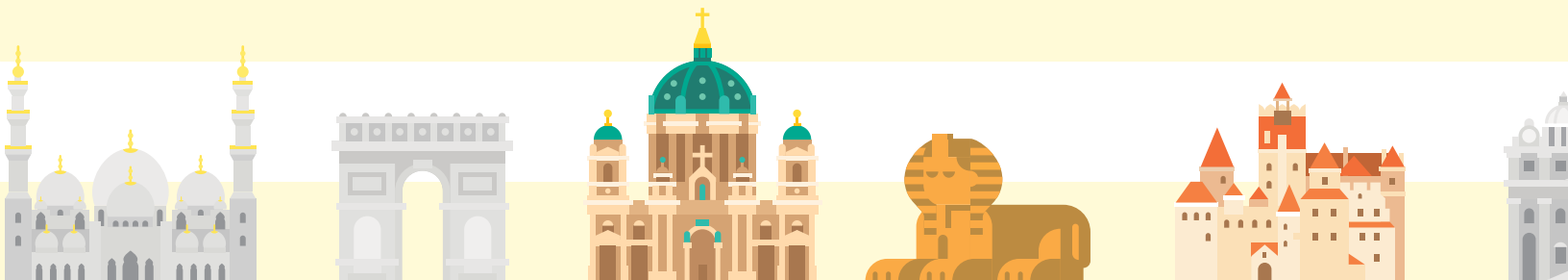
Summary

Many ethnic groups in Missouri are not mentioned in this prayer guide. There are small pockets of immigrants and individual families scattered throughout the state. These groups come from a variety of cultures and socio-economic backgrounds. Despite differences, all ethnic groups in Missouri need prayer and outreach.

The list on the opposite page includes smaller populations among Missouri's top 50 immigrant groups.

Prayer requests

- Pray that God calls Missouri Baptist churches to reach easily overlooked ethnic groups in Missouri.
- Pray that isolated immigrants find a warm welcome among Missouri Baptists churches.
- Pray for God to strengthen believers among the smaller groups so they are ready to disciple immigrants who may come after them.
- Pray for God to call churches from larger ethnic populations to adopt immigrants from groups that are culturally similar.



Country	Present In MO	% Christian	% Evangelical
Micronesia	2,263	95.4%	22.8%
Bulgaria	1,282	82.4%	2%
Saudi Arabia*	1,379	4.02%	0.5%
Romania	1,646	93.7%	6.3%
Egypt*	1,499	13.1%	4.5%
Liberia	1,168	40%	11.7%
France	1,830	62.4%	1.2%
Haiti	1,450	94.8%	17.5%
South Africa	1,343	77.1%	21%
Bangladesh*	1,484	0.4%	Unknown
Turkey*	1,129	0.6%	0.03%
Albania*	1,241	33.6%	0.6%
Total	17,714	*Closed/Unreached	

FIGURES & ATTRIBUTIONS

This booklet uses several sources for the data it presents. Most articles use population data taken from the 2021 American Community Survey conducted by the United States Census Bureau. These numbers include only first-generation immigrants. The Afghan article uses refugee relocation estimates calculated by the State Department after the US military withdrawal in 2020. Population figures include immigrant totals from bordering counties in the St. Louis and Kansas City metropolitan areas.

Percentage estimates of Christians and Evangelicals in each nation use data from the Joshua Project (<https://joshuaproject.net>).

Cultural descriptions contain additional information sourced from the Joshua Project and the International Mission Board (<http://peoplegroups.org>).

There are discrepancies between US Census data and other sources. For example, this booklet lists the number of Somali immigrants as 2,015. However, refugee placement agencies count nearly 13,000 in Kansas City and St. Louis alone. The numbers in this booklet are conservative estimates.

All photos are used with permission, courtesy of the International Mission Board.

NOTES:

NOTES:

INTEREST FORM

Name

Church

Email

Phone

ADDRESS

Street

City / State

ZIP

- We are interested in adopting a people group
- We are interested in ethnic church partnerships



This prayer guide was produced through the generosity of Missouri Baptist churches and their participation in the Cooperative Program.

Through the Cooperative Program, your church, the Missouri Baptist Convention, and the Southern Baptist Convention share financial resources that enable us to do more together than we could ever do alone. This partnership begins with you and your gifts to your local church.

A portion of your church's annual budget is shared through the Cooperative Program, which supports missions and ministries at the state, national, and global levels.

Learn more about CP at mobaptist.org/cp.



After this I looked, and there before me was a great multitude that no one could count, from every nation, tribe, people and language, standing before the throne and before the Lamb. They were wearing white robes and were holding palm branches in their hands. And they cried out in a loud voice:

*“Salvation belongs to our God,
who sits on the throne,
and to the Lamb.”*

Revelation 7:9-10 (NIV)